



Urban Garden

Urban Desert

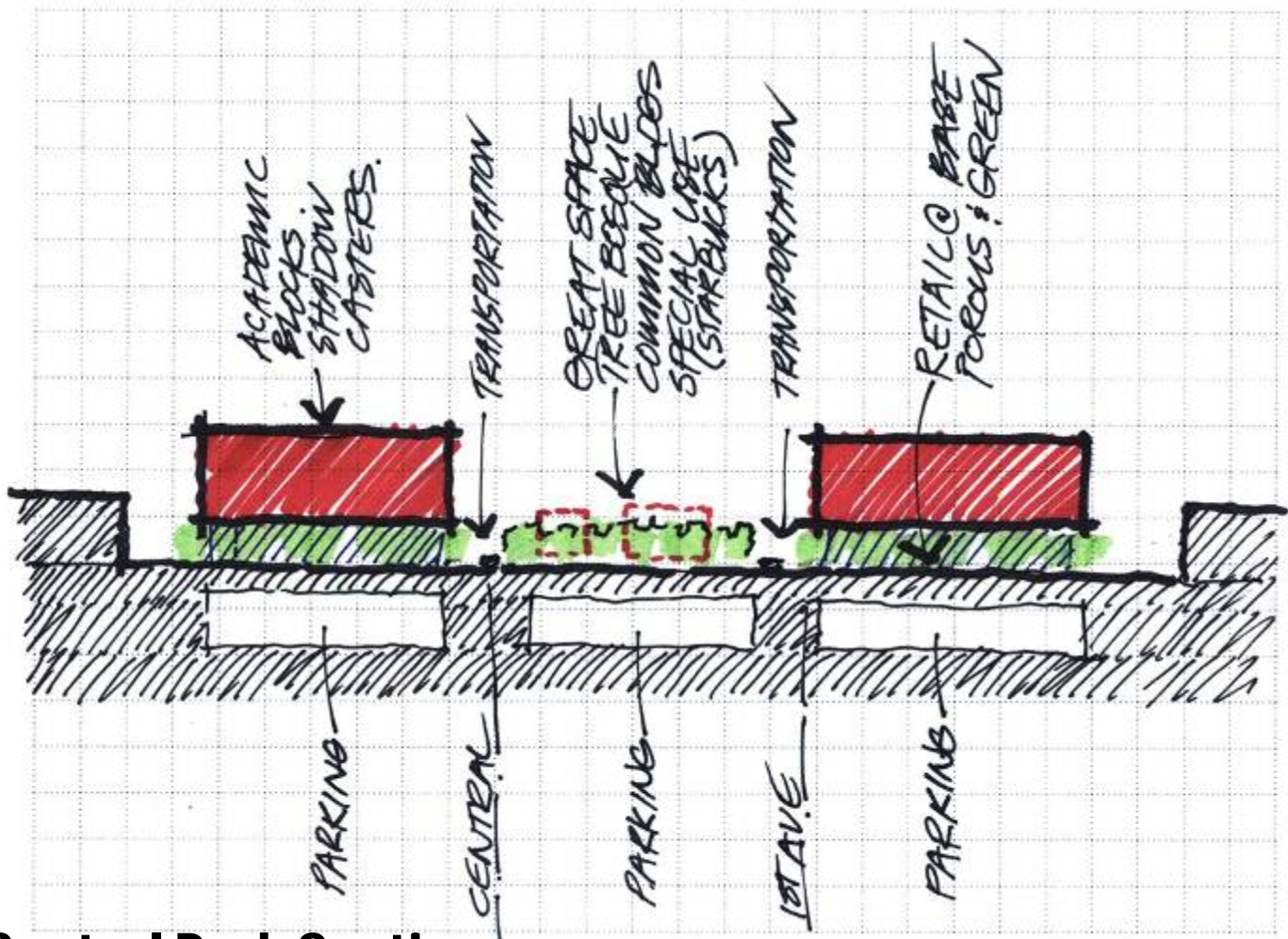


**Urban Garden**



STITCHING EAST & WEST WITH AN OPEN SPACE, A CIVIC SPACE THAT ACTS AS NORTH/SOUTH GATEWAY TO DOWNTOWN AND A CAMPUS IDENTITY

**Central Park**



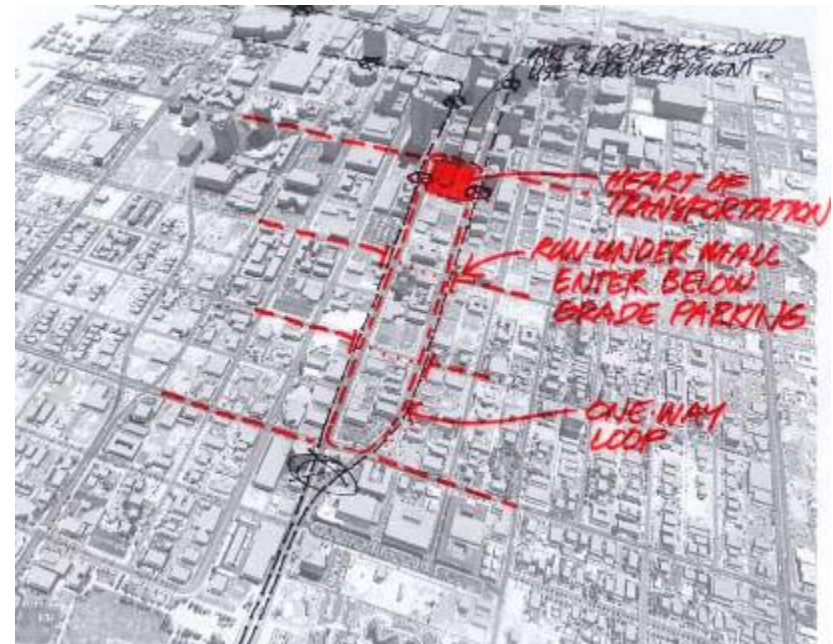
**Central Park Section**



Land Use



**Parking**



**Transportation**



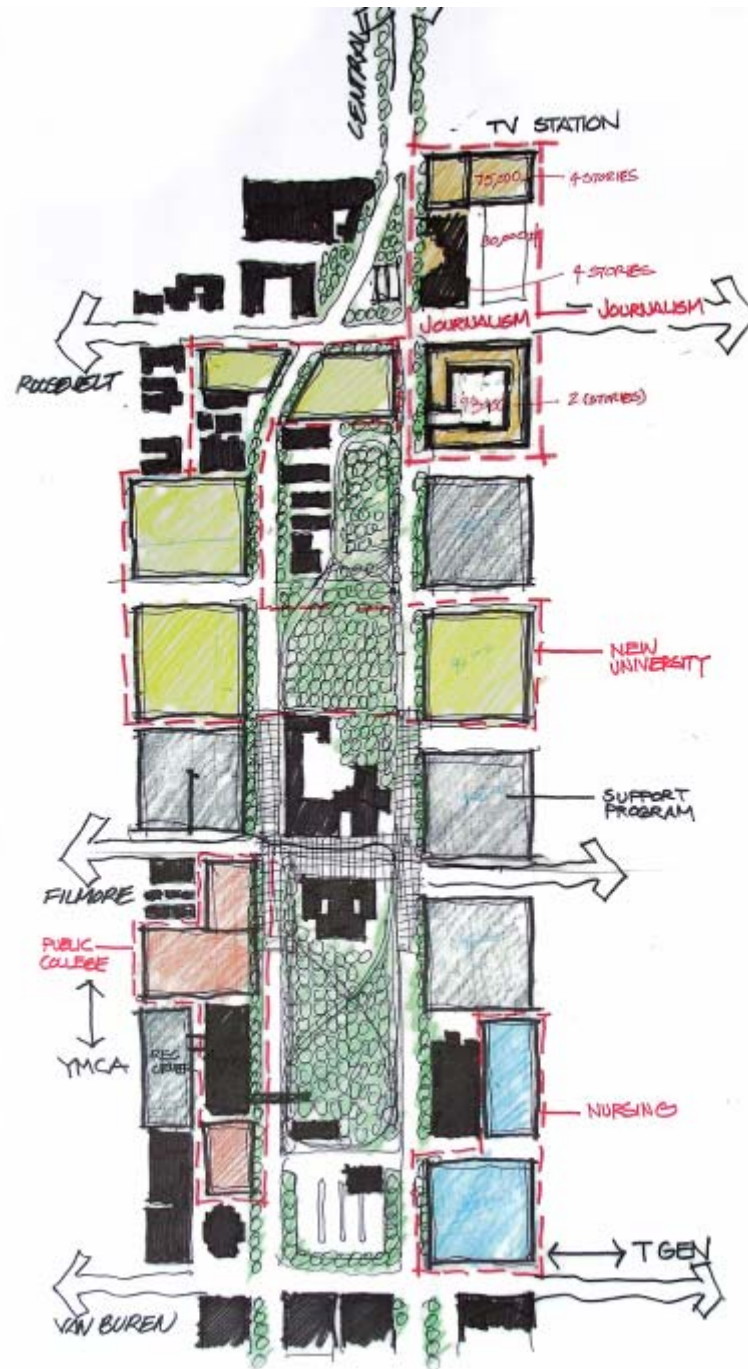
**4 Million Square Feet**  
4 stories

# Program Distribution -1

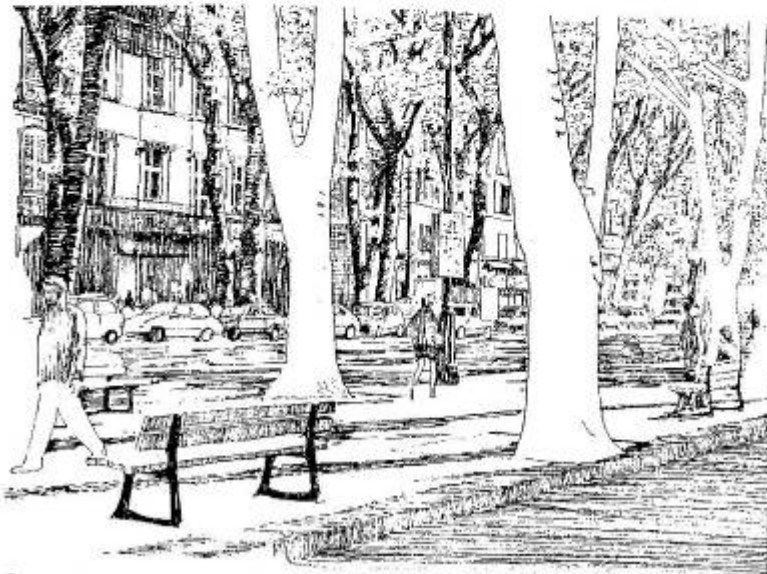




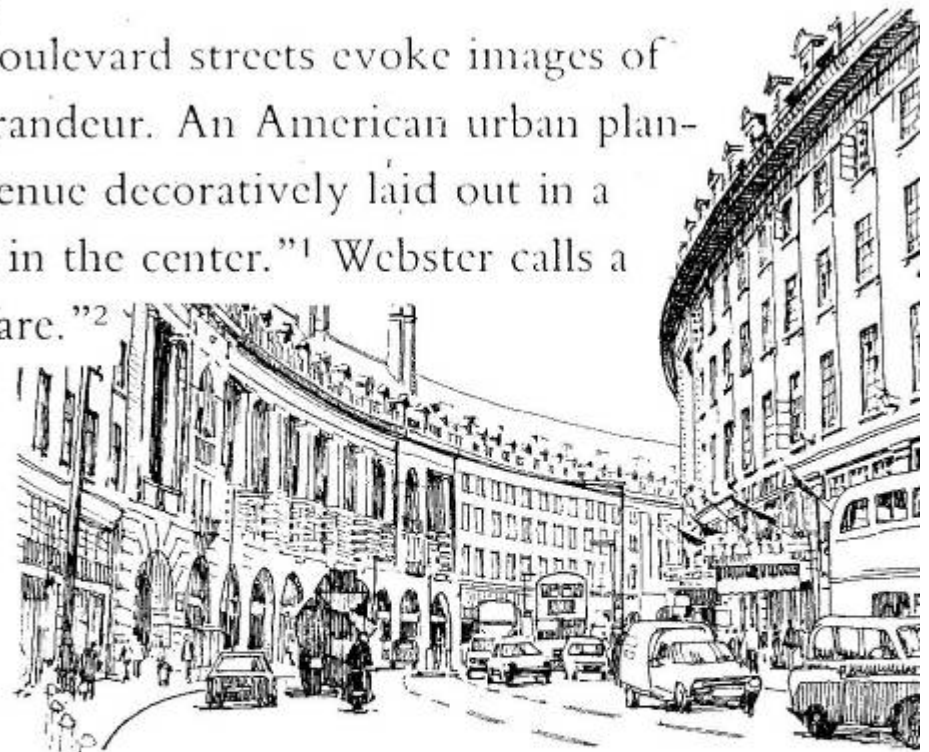
# Program Distribution -2



A boulevard is more than a wide street. Boulevard streets evoke images of size and formality, with an emphasis on grandeur. An American urban planner's definition, in 1927, was "A broad avenue decoratively laid out in a formal manner, especially with park space in the center."<sup>1</sup> Webster calls a boulevard "a broad, landscaped thoroughfare."<sup>2</sup>



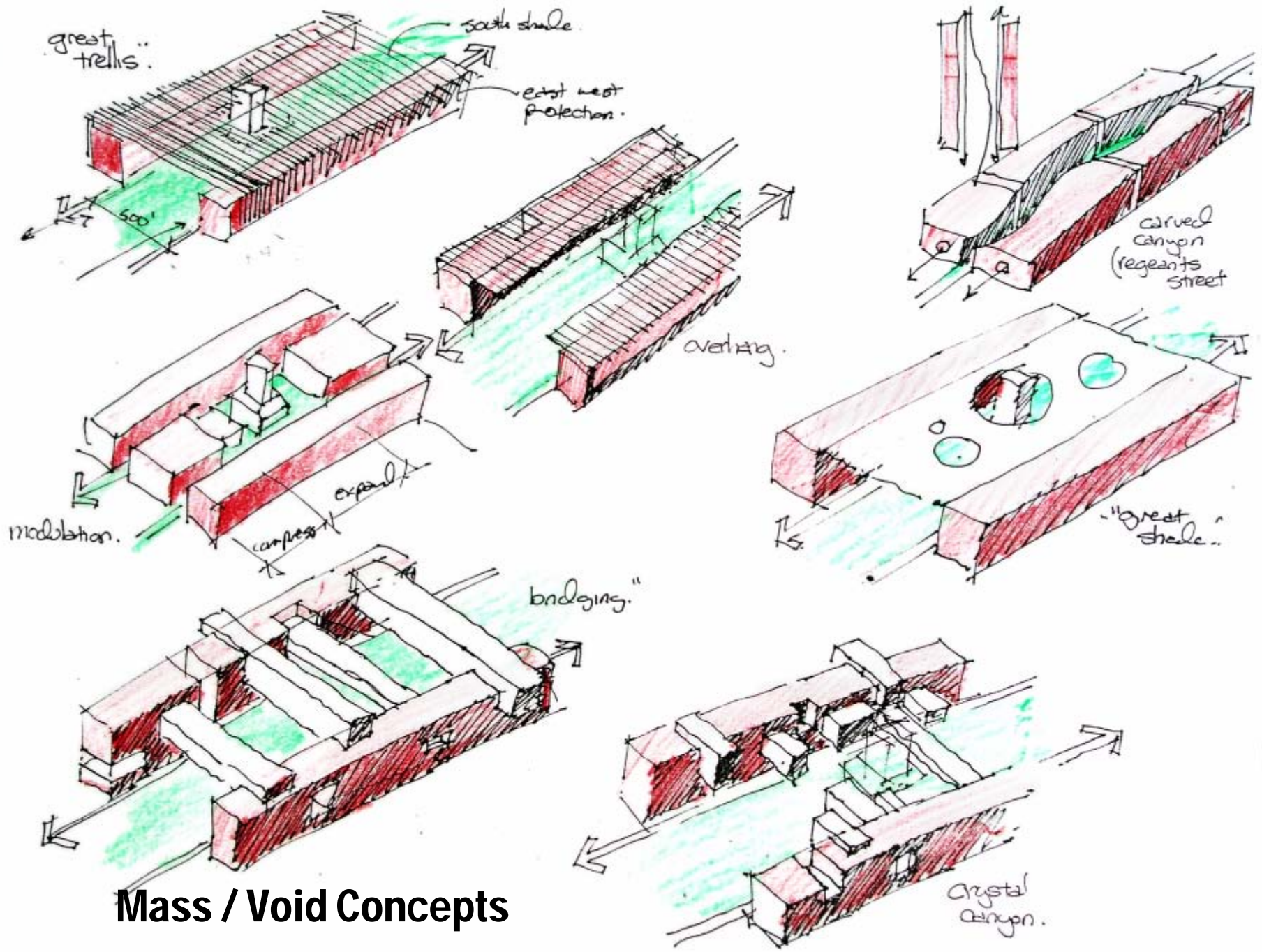
*José Maria*



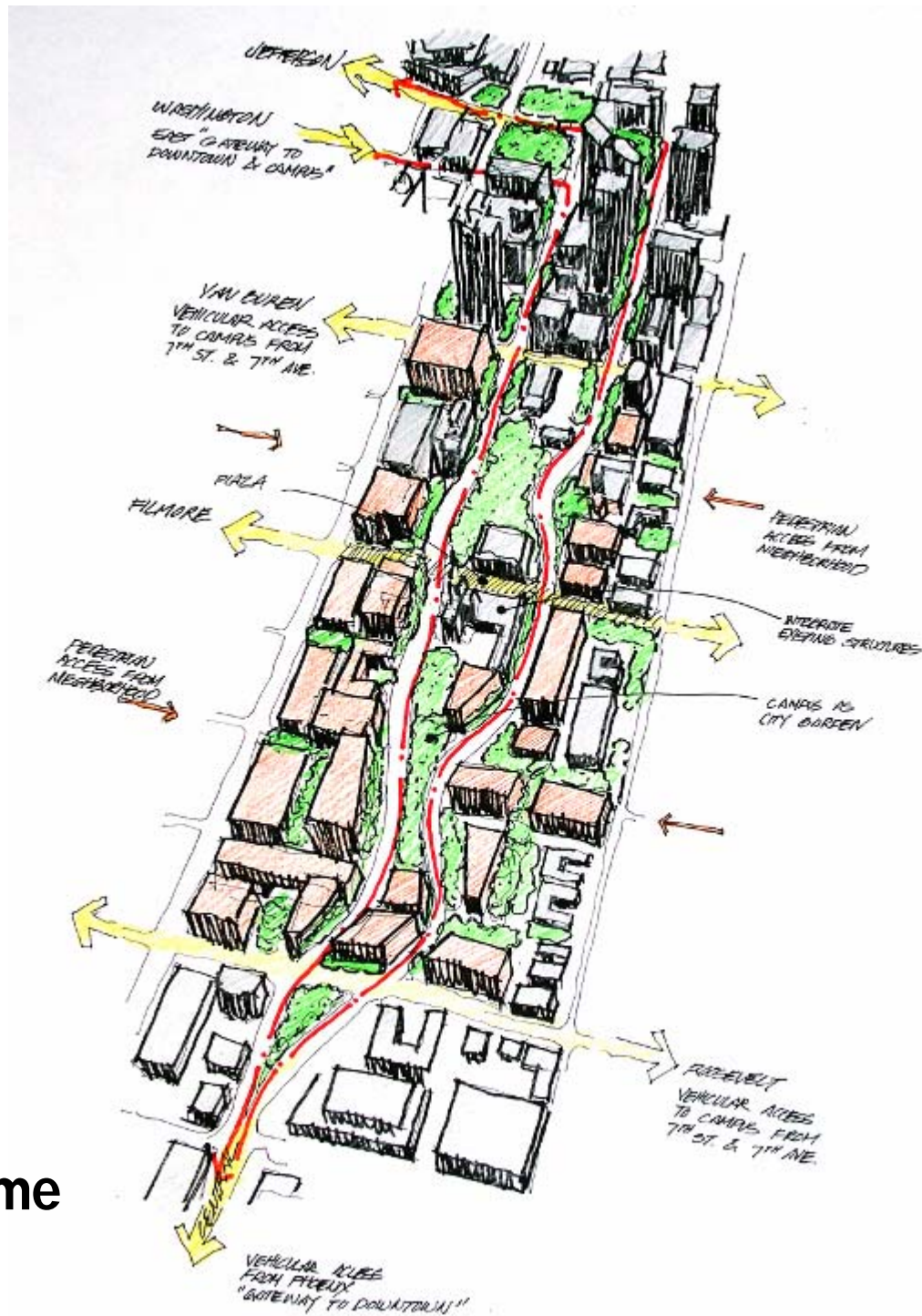
*Regent Street*

# GREAT STREETS

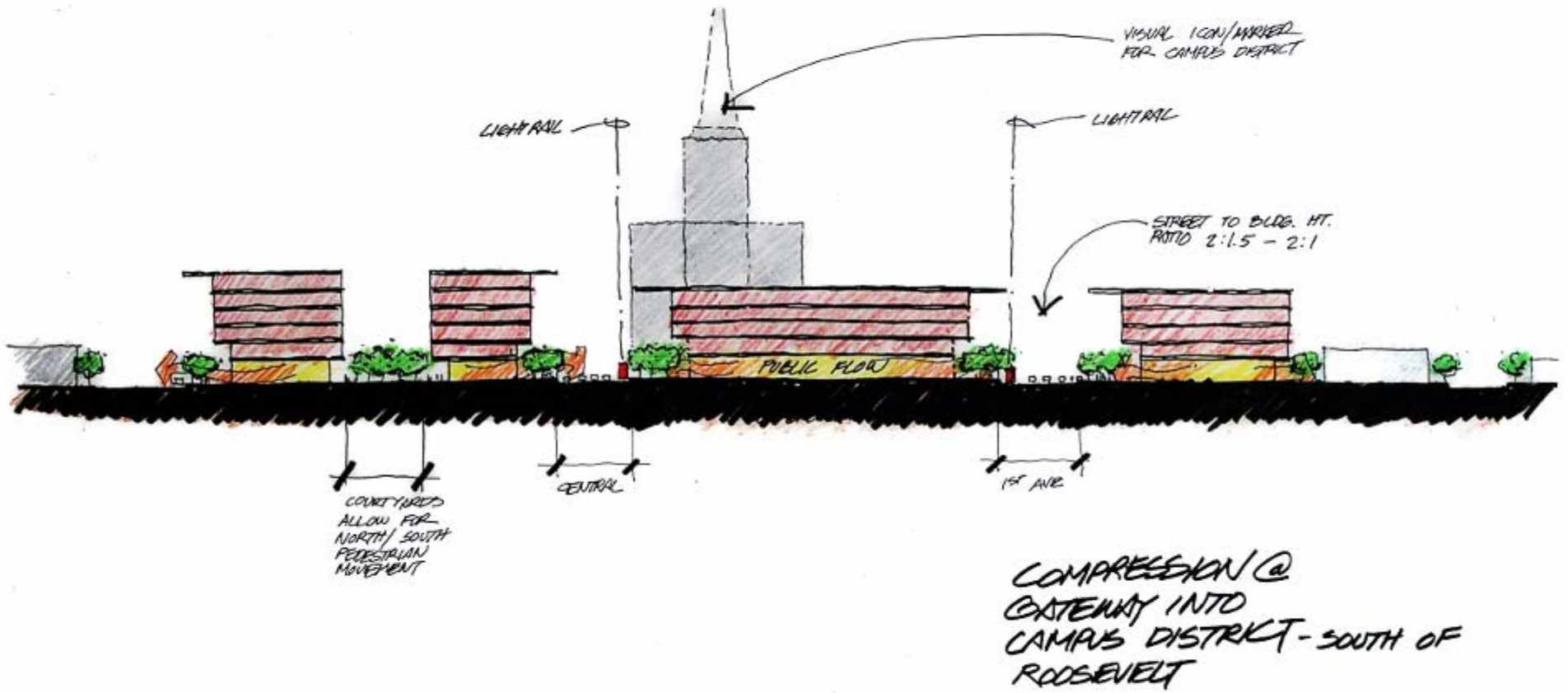
## "Central Boulevard"



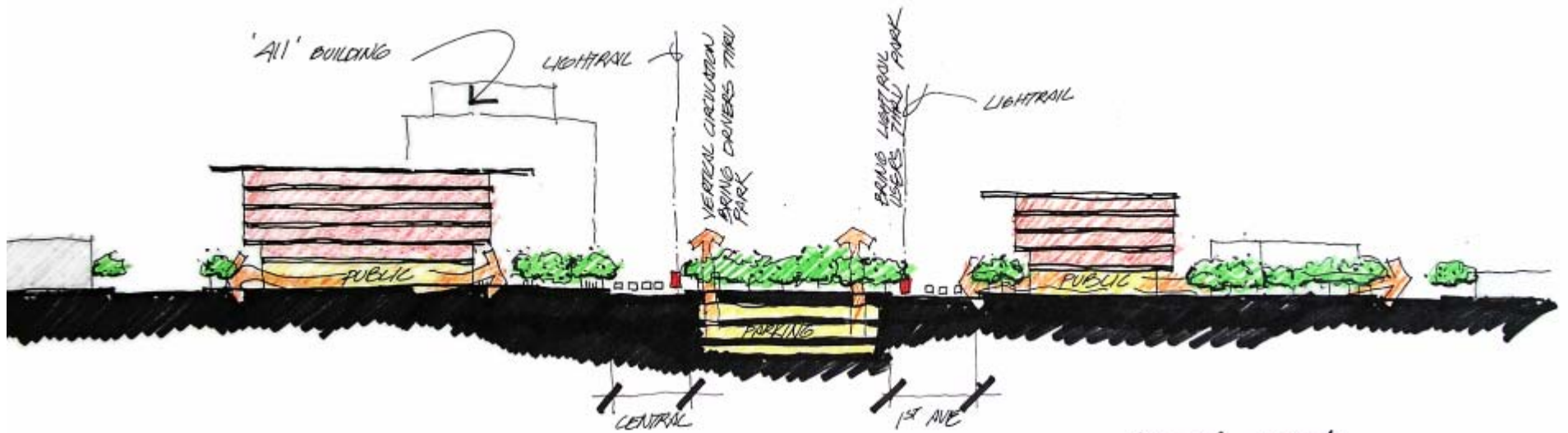
# Mass / Void Concepts



**Canyon Scheme**

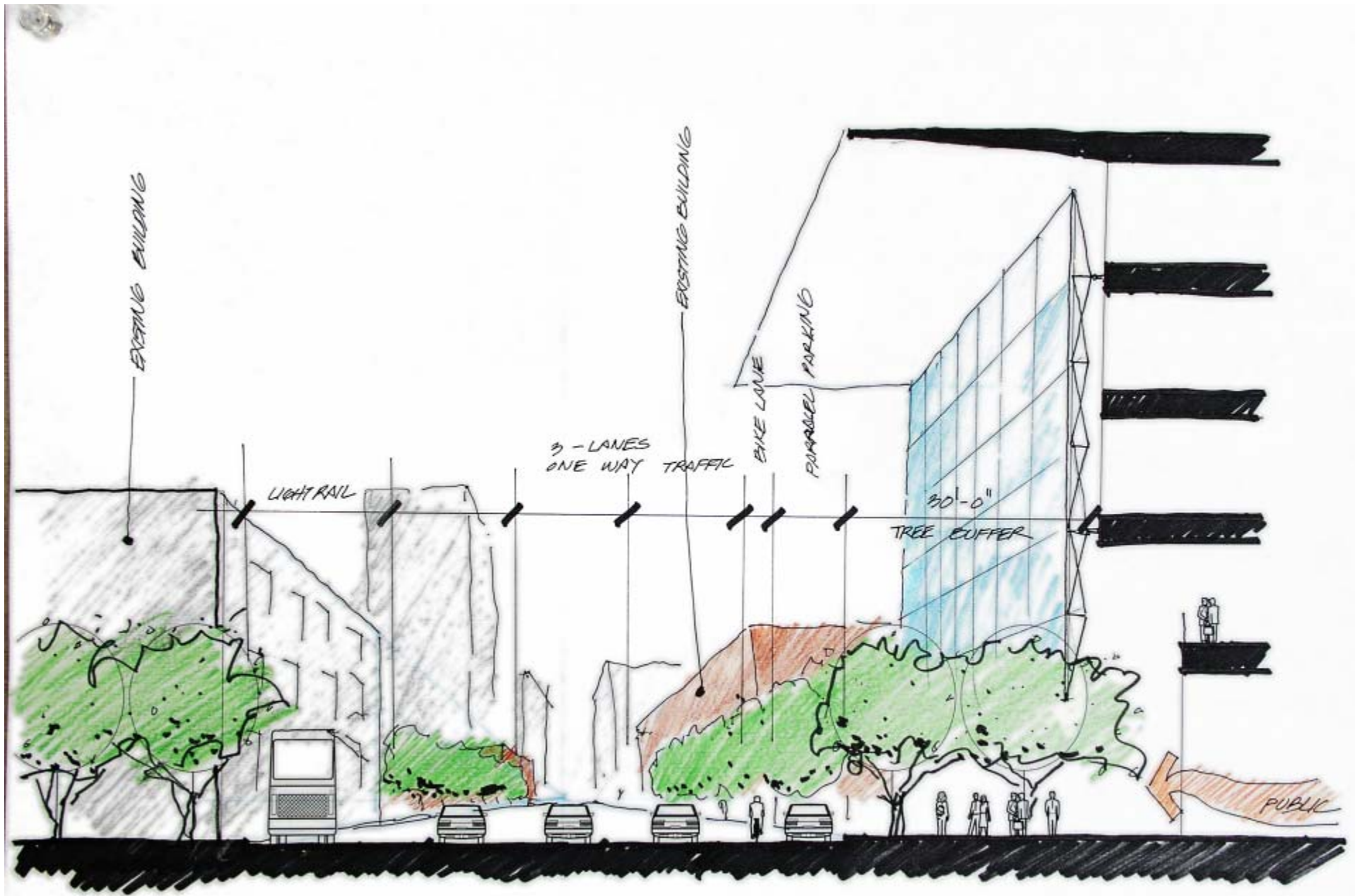


## Compressed Space

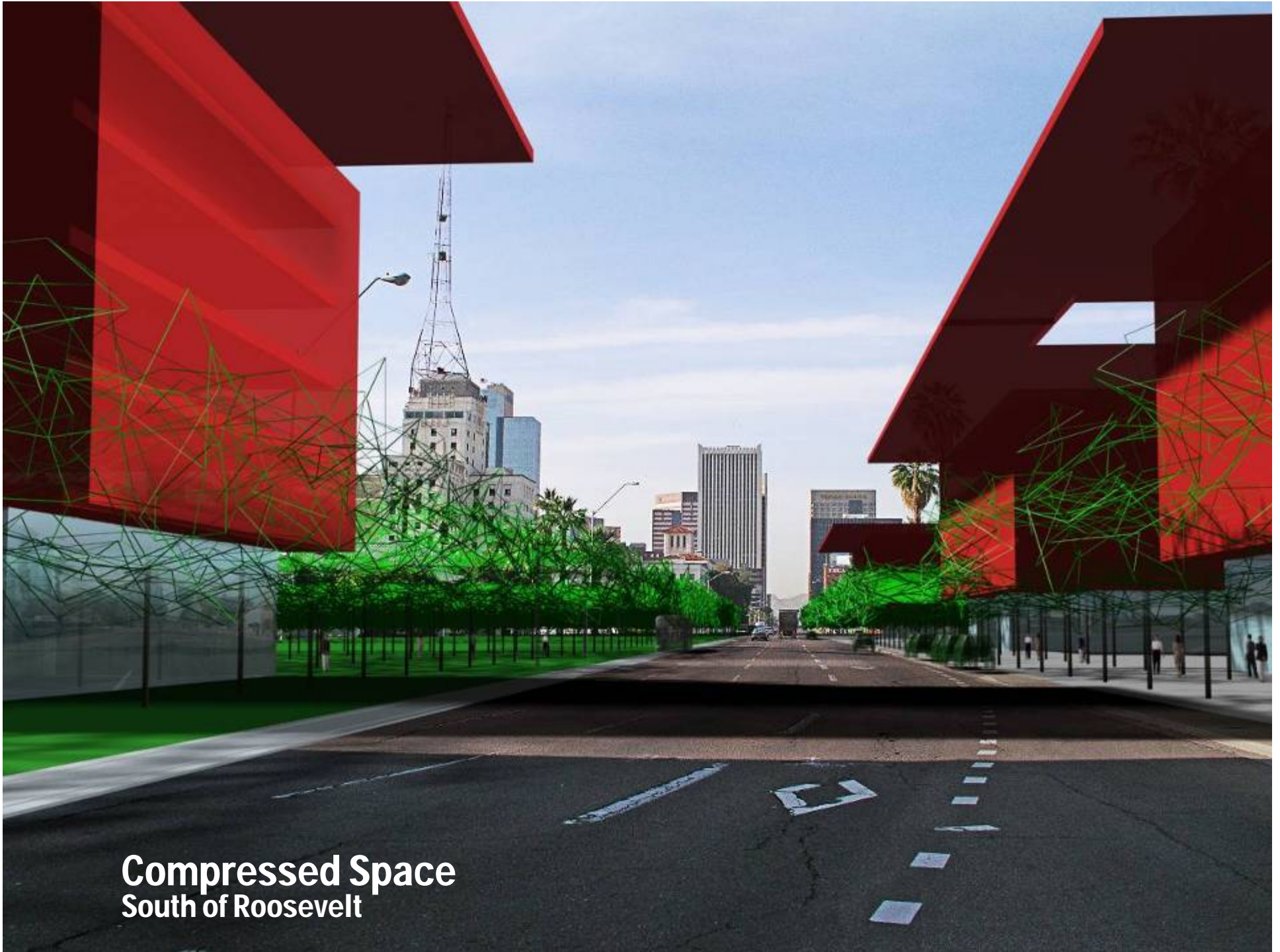


Open Space

OPEN PARK  
BUILDINGS PUSH  
TO LANDSCAPE EDGE -  
SOUTH OF FILMORE



**Street Section**

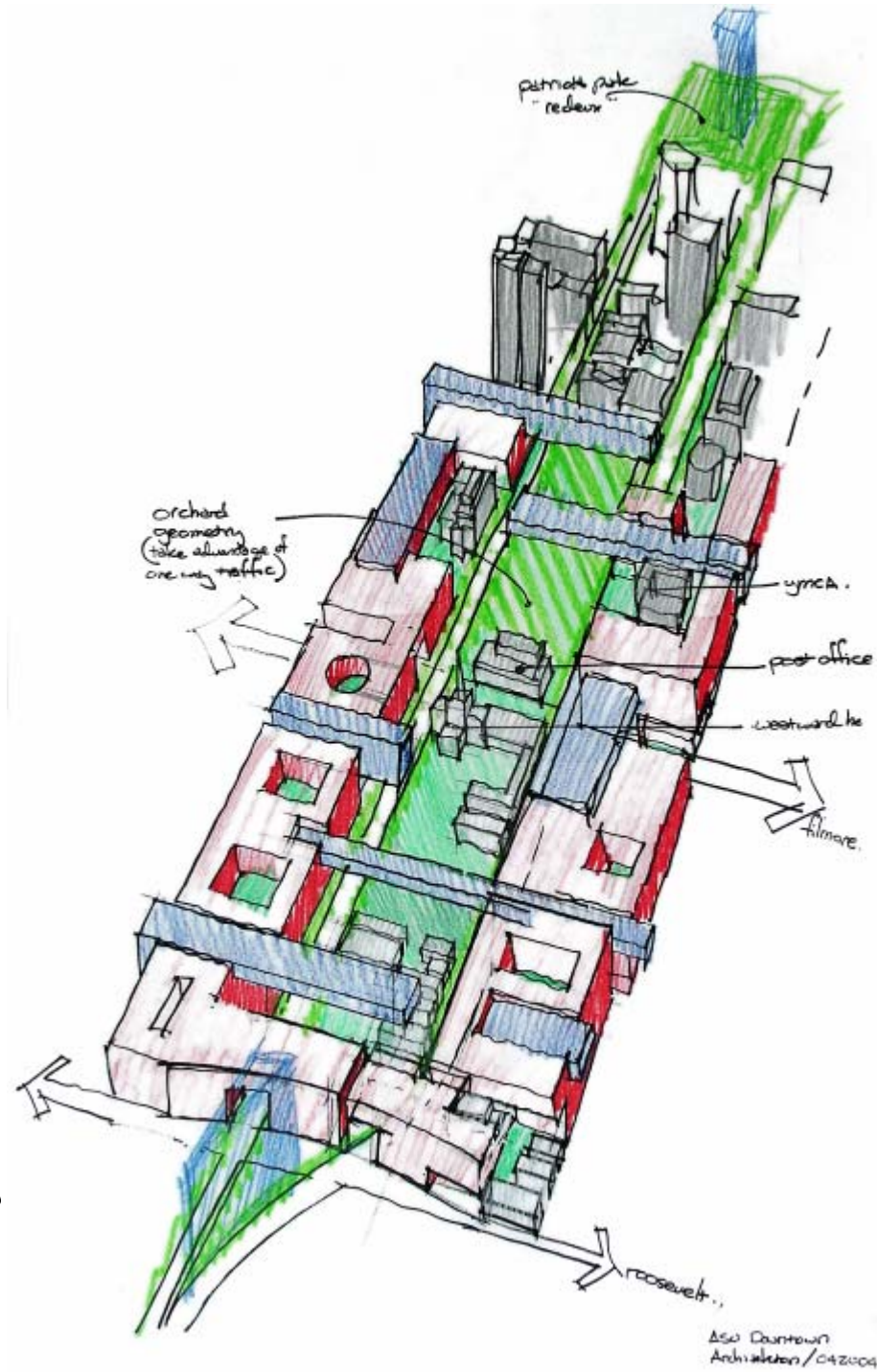


**Compressed Space**  
South of Roosevelt



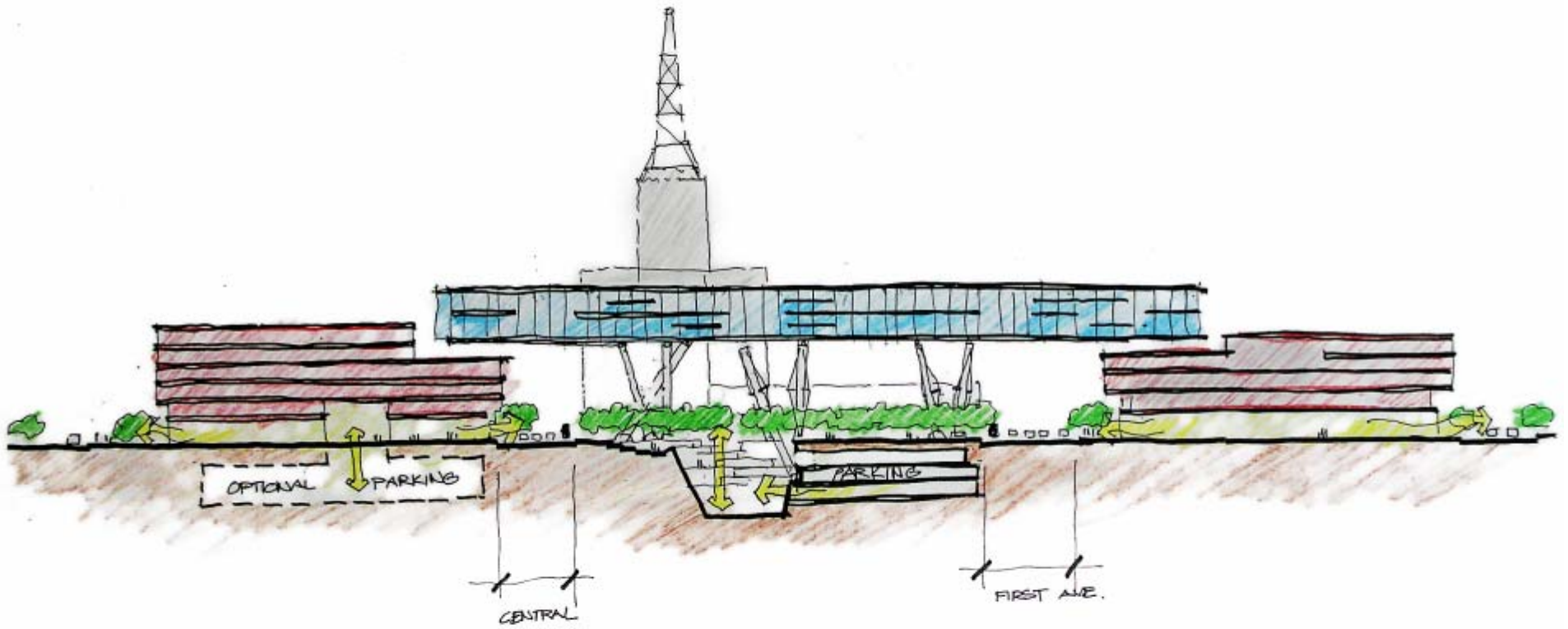


**Open Space  
North of Fillmore**

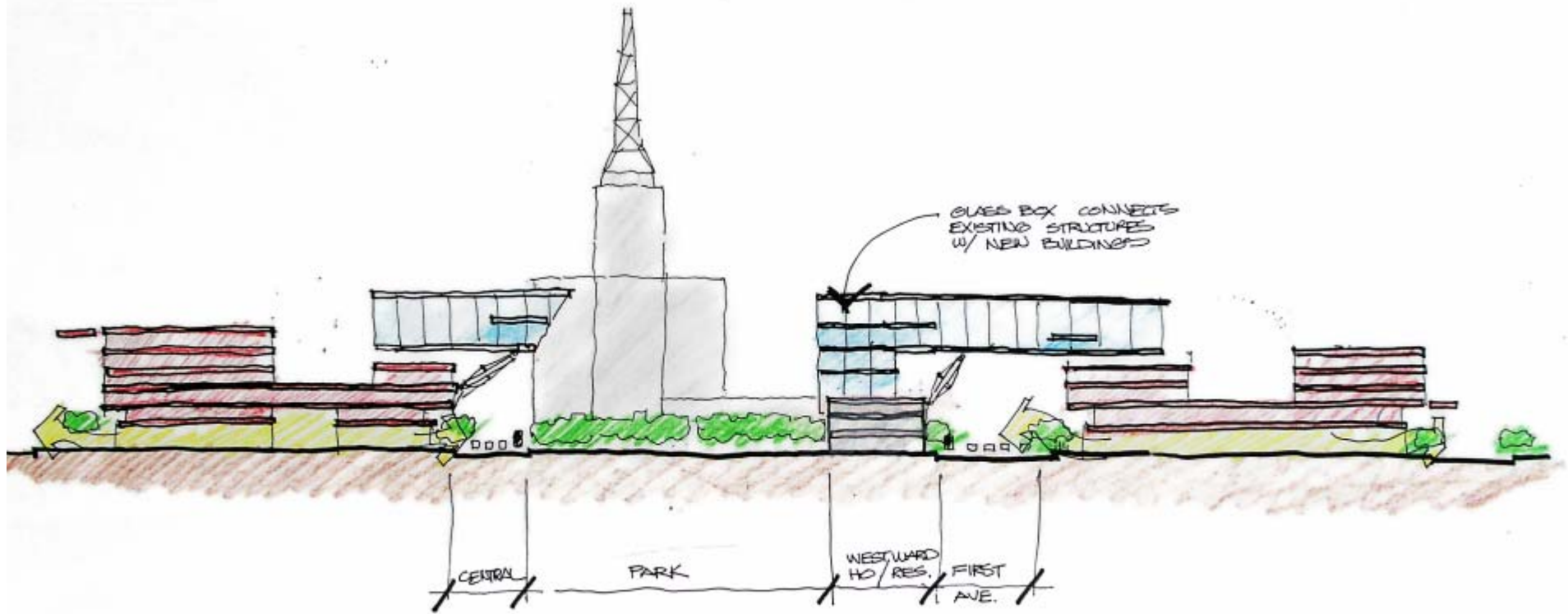


# Crystal Bridges

ASO Downtown  
Architecture / 042004



**Full Span Section**



**Open Park Section**



**Crystal Bridges**