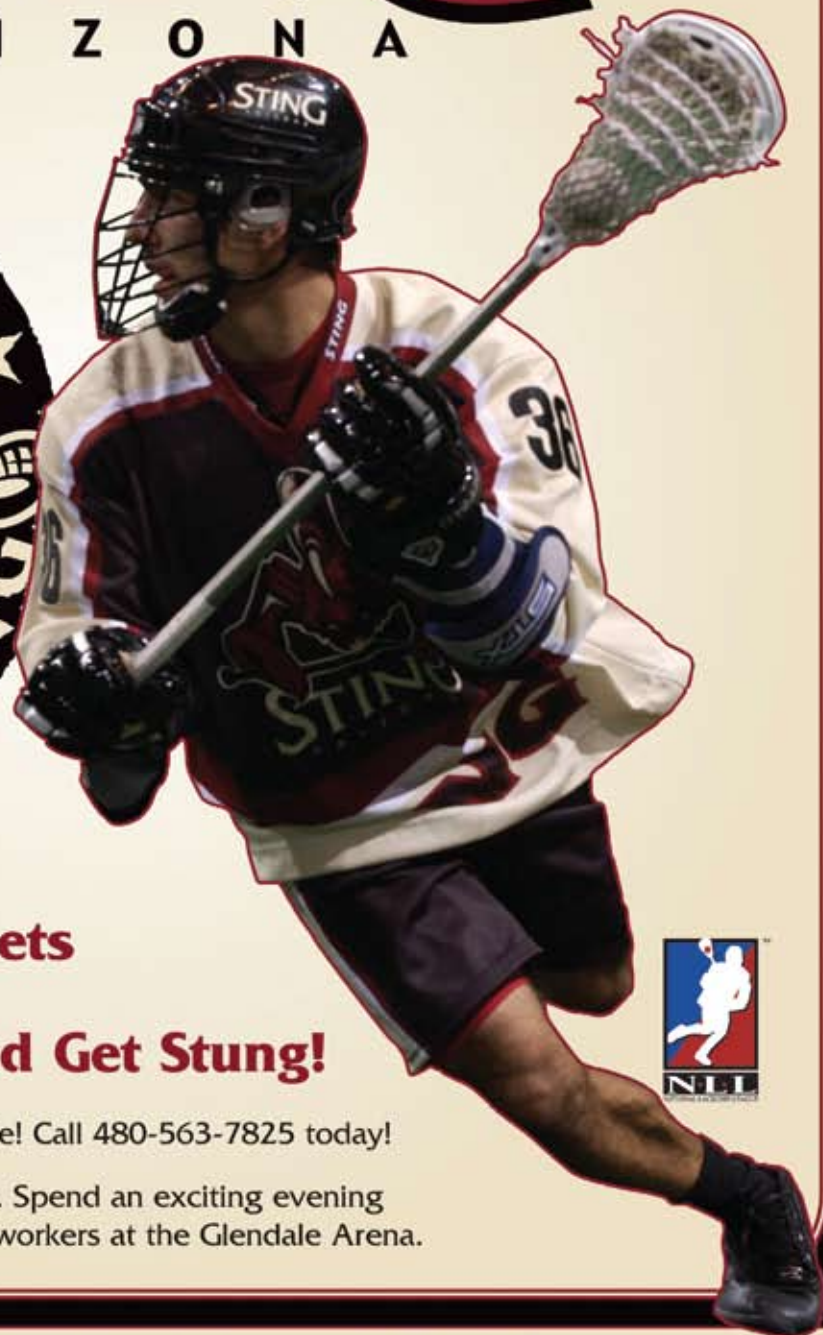


STING

A R I Z O N A



**Individual game tickets
are on sale now!
Call Ticketmaster and Get Stung!**

Season ticket packages are still available! Call 480-563-7825 today!

Also ask about special group packages. Spend an exciting evening with friends, family, teammates, or co-workers at the Glendale Arena.

FRI, FEB. 4 @ 8:00 PM
VS. ANAHEIM STORM

FRI, MAR. 11 @ 7:30 PM
VS. SAN JOSE STEALTH

SAT, APR. 9 @ 7:30 PM
VS. COLORADO MAMMOTH

FRI, FEB. 18 @ 7:30 PM
VS. MINNESOTA SWARM

FRI, MAR. 25 @ 7:30 PM
VS. CALGARY ROUGHNECKS

SAT, APR. 16 @ 7:30 PM
VS. ANAHEIM STORM

480-784-4444 • ArizonaSting.com

ticketmaster



ARIZONA STATE UNIVERSITY MEN'S LACROSSE 2005



www.laxdevils.com





GAME DAY PROGRAM

www.laxdevils.com

WARNING:

The game of lacrosse is dangerous! The ball is made of hard rubber and can travel at speeds in excess of 90 M.P.H., fast enough to kill someone. Never go near the ends of the field while the ball is in play. Always keep your eye on the ball when the game is in play. The ball, players, and equipment can all be propelled off the field, including into the spectator area, at excessive speeds. Please be careful and everyone will enjoy a safe game.

RESTROOMS:

Restrooms are available in the white building past the football turf practice field on the NE corner of the field.

CONCESSIONS & APPAREL:

Concessions and apparel are available from parents at the table in the middle of the spectator area.



CREDITS:

Program Design:  AgentOgden.com

Producer: Jodi Vosika

Player Photos: Jessica Slater

Action Photography: Stephanie Connell, Norm Hall

Cover Photo: sportseye.com

THINKING ABOUT BECOMING A SUN DEVIL?

INTRODUCTION MESSAGE FROM HEAD COACH JON MINDER:

First, congratulations on your consideration of Arizona State University and Sun Devil Lacrosse. Choosing the college or university you'd like to attend is one of the most important decisions in your life. Ultimately, the school that provides the best combination of academics and student life, for you, should be your final choice. As most any student or alumnus will tell you, Arizona State consistently ranks among the best for a combination of academics and student life. I encourage you to involve your family and friends while making this decision, and if ASU is right for you then let me be the first to say welcome! If you choose Arizona State, as an alumnus of the program, I guarantee playing lacrosse while you are here will be the most memorable experience of your college life. At Arizona State, our standards are high. The coaching staff will push you to be the best, setting exceptional goals and reaching them through character, leadership, and discipline, just to name a few. You have an opportunity to be part of something special, but it doesn't come without commitment. I encourage you to join our family for a defining moment, as the team becomes a national contender in 2005 and beyond!

WHY ASU?

There are many good reasons to attend and play lacrosse at ASU.

First, this is a great place to get a college education. ASU consistently ranks among the best for a combination of academics and student life. In addition, as the fourth largest university in the United States, ASU's diverse alumni body affords many opportunities for internships and post collegiate work well beyond the scope of most other schools. Finally, Tempe boasts the metropolitan resources of Phoenix, the 5th largest city in the country and numerous activities accommodated by 330 sunny days each year. In fact, Tempe is such an outstanding place to be, Super Bowl XXX was played at Sun Devil Stadium in 1996.

Second, Sun Devil Lacrosse provides a very competitive lacrosse experience, on a national scale, without the overwhelming pressure and time-commitment of big-time Division I varsity lacrosse. Our student-athletes are expected to dedicate themselves to the team, but they are given the time and latitude to focus on academics. Some turned down college varsity opportunities to come to school and play here for just that reason. The atmosphere on this team is much like a top Division III program, with a healthy combination of athletics, academics and social life.

Third, this is an exciting time to be part of lacrosse at Arizona State. Over the last 3 years under the direction of Coach Minder, the team has rebuilt from a troubled period following the 2000 season and now threatens to break into the nationally elite of the USL-MDIA. The opportunity to be part of a very special transformation over the next few seasons is unmatched by any other college team in the nation.

LEARN MORE

laxdevils.com and asu.edu/admissions

I would enjoy the opportunity to schedule a campus visit and meet with you and your parents in Tempe. Hopefully, you've already made the decision to have the time of your life as a Sun Devil Lacrosse student athlete. I hope to talk with you soon and see you in Tempe for a championship season in 2006 or beyond!

FOR MORE INFORMATION ABOUT THE TEAM, VISIT: WWW.LAXDEVILS.COM

FOR MORE INFORMATION ABOUT ASU AND TO APPLY ONLINE VISIT: WWW.ASU.EDU/ADMISSIONS

LAX
WAREHOUSE
1 Lacrosse Outlet
Equipment & Apparel
(480) 951-3LAX

All Lacrosse - All the Time!

Conveniently located in the Scottsdale Airpark
 7302 E. Helm Dr. #2002 (Acoma & 73rd St)

Scottsdale, Az 85260

Your one-stop Lacrosse Store!

Contact Owner/Operator Albin Haglund

By phone or via e-mail: binazlax@aol.com

Go Devils!

Sir Speedy
 SCOTTSDALE



DIGITAL COLOR

GRAPHIC DESIGN

POW FOR PUBLISHING
(Print Quantity Needed)

DOCUMENT MANAGEMENT

FACILITIES MANAGEMENT

FULFILLMENT

7373 East Camelback Road • Scottsdale, Arizona 85251
480.947.7727 • Fax: 480.946.3957
www.sirspeedy.com/scottsdale • E-mail: orderit@sirspeedyscottsdale.com

WELCOME

Thank you for joining the ASU Men's Lacrosse team for today's game. The team has a rich history having been on campus since 1968, winning league championships in 1995 and 1997. We compete for a league and national championship every year against the top US Lacrosse Men's Division Intercollegiate Associates programs in the nation.

In 2005, the Sun Devils enter their 37th season on campus. ASU Lacrosse heads into 2005 with one of the toughest schedules in the nation featuring 8 ranked opponents and 9 exciting games at home. Another change for 2005 is the WCLL realignment into 4 "A" divisions instead of the previous north / south arrangement. ASU is now in the WCLL Division A South along with Arizona, San Diego State, and UC San Diego. The team is looking forward to big things in 2005 and needs your continued support to enjoy a true home field advantage.

JON MINDER - HEAD COACH

Coach Minder begins his fourth year at the helm in 2005 and brings over 12 years of lacrosse experience as a player and coach. Coach Minder played at ASU from 1996 – 1999 when the team posted a 10 –1 record in 96 and won their WCLL division in 97. During his time as a student-athlete, coach Minder served in several roles as a cornerstone of team leadership. Coach Minder works in marketing for Smith & Wesson and resides in Scottsdale.

Chris Mathison – Assistant Coach

Coach Mathison enters his second season on the coaching staff. In 2004, coach Mathison was a graduate assistant after rounding out his playing career in 2003 as a senior captain of the team at defense. He is currently finishing up at ASU while living in Tempe.

For more information about anything concerning Sun Devil lacrosse, please visit our website or feel free to speak with any member of the coaching staff following the game.

THANK YOU FOR YOUR SUPPORT!



2005 TEAM INFORMATION

Location: Tempe, Arizona

Nickname: Sun Devils

Conference: Western Collegiate Lacrosse League (WCLL) www.wcll.com
Division Champions, 1995,1997.

League: US Lacrosse - Men's Division Intercollegiate Associates, www.uslia.com

Colors: Maroon and Gold

Home Field: Sun Devil Band Field

Field Surface: Grass

PERSONEL

Athletic Director: Eugene Smith

Club Sports Director: Chad Ellsworth

Head Coach: Jon Minder

Assistant Coach: Chris Mathison

Trainer: Heidi Wutscher, PT, ATC, CSCS: Pysiotherapy Associates, Tempe, AZ

ALUMNI & TEAM REPS

Alumni President: Trey Reeder

Parent Rep: Jodi Vosika, Steve Noel, Charles Gray

Player President: Marty Ahern



Kent Lester

480**695-5521**

FAX 480**941-1491**

New Construction • Commercial • Residential • Service & Repair

P.O. Box 11424, Scottsdale AZ 85271 • email: javelinaplumbing@yahoo.com
Commercial License No. ROC175617 Residential License No. ROC170534



Neal's Fishing Products

910 S. Hohakam Dr. #120 • Tempe, AZ 85281

480-945-6122 or fax 480-829-6122

Email: killrrod@ix.netcom.com

www.nealsfishingtackle.com



voted "BEST DOGS!"

delicious grilled hot dogs on a toasted bun

NOW FEATURING NEW FAVORITES:

- EAST COAST SLIDERS
- GRILLED, MARINATED CHICKEN
- \$2 ICE COLD BEER

We make America's favorite food BETTER!

On University Dr. 2 blocks est of Mill Ave.
408-967-3647

WE DELIVER!

Sun-Wed until 2am!
Thurs-Sat until 3am!

Rio Salado

NOW DELIVERING

Broadway

www.davesdoghouse.com
OPEN LATE!
Sun-Wed 2am and Thurs-Sat 3am



ENTEGRITY supports Arizona State Men's Lacrosse



Don B. Headley, MD

BOARD CERTIFIED
Otolaryngology
Head & Neck Surgery
Ear, Nose & Throat Surgery

11209 N. Tatum Blvd.
Suite 275
Phoenix, AZ 85028

Tel: 602.494.5090
Fax: 602.494.5055

WHAT HAPPENS TO YOUR HARD EARNED MONEY AFTER YOU ARE GONE?
PROTECT YOUR FAMILY AND YOUR ASSETS WITH A REVOCABLE LIVING TRUST

EPSestateplans
.COM

Jodi Vosika

Estate Planning Strategies, Inc.
34522 N. Scottsdale Rd., D-8, #617
Scottsdale, AZ 85262
480-861-7743 • Fax 480-926-6829
jodi@epsestateplans.com

CUSTOMIZED REVOCABLE LIVING TRUSTS DRAFTED BY AN ARIZONA BAR
CERTIFIED ESTATE PLANNING SPECIALIST

ALUMNI & BOOSTERS

The Stickmen's Club is an alumni directed organization that exists to support lacrosse at Arizona State. Stickmen's Club membership is not exclusive to alumni, the club is open to anyone who wishes to support the team. The Stickmen's Club is actively searching for former players to add to the alumni database and non-alumni supporters.

BOARD OF DIRECTORS

President: Charles H. (Trey) Reeder, III
Vice-President: Mike Clare
Treasurer: John Figueroa
Secretary: Zane Haserot

DIRECTORS AT LARGE

Todd (Crobar) MacRobbie
Jonathan Minder
Craig Hochreiter
Matthew Ogden

NON-VOTING DIRECTORS

Townsend (Ty) Blanchard
Jeff Myers
Ryan Pavlicek

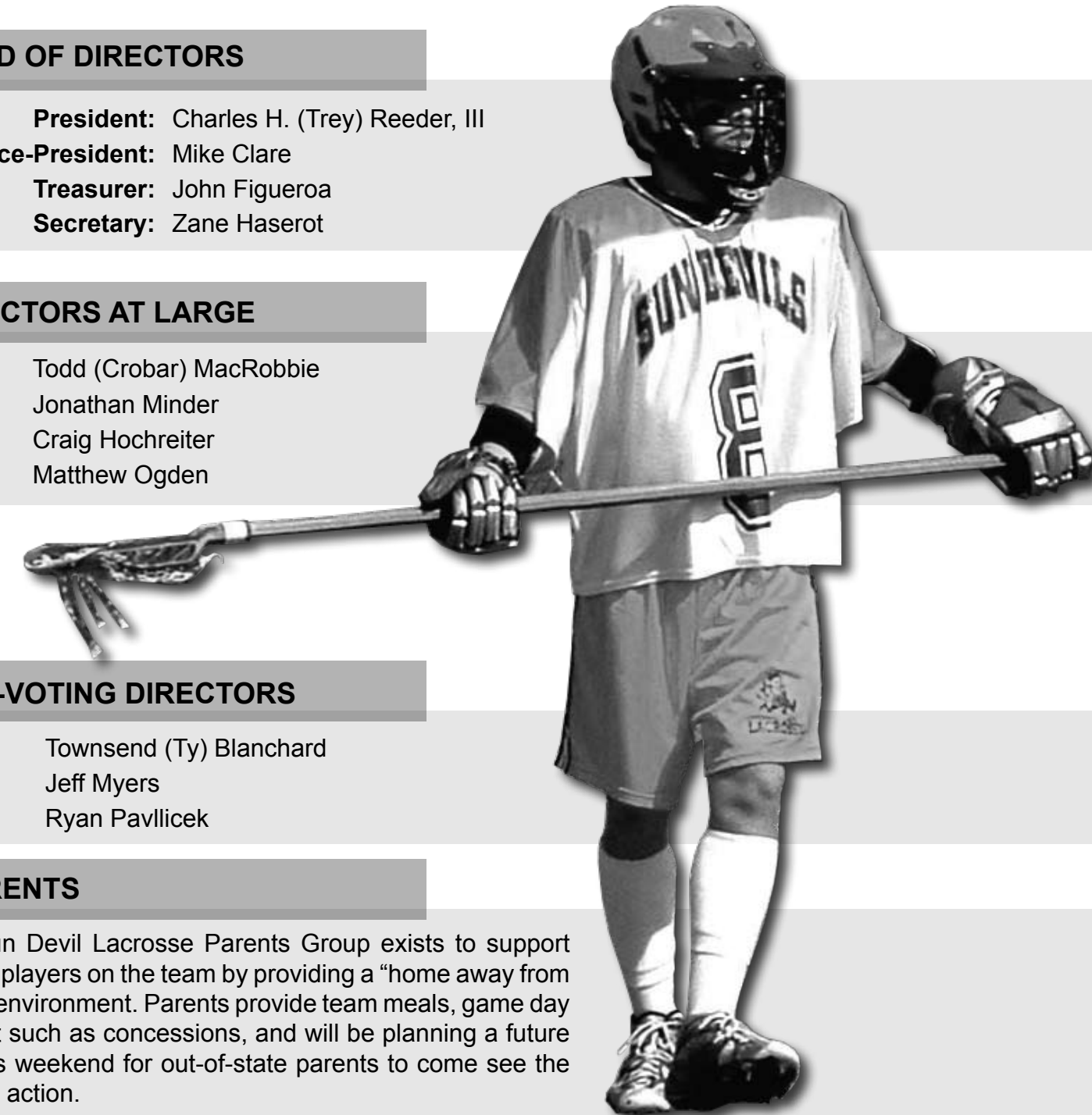
PARENTS

The Sun Devil Lacrosse Parents Group exists to support current players on the team by providing a "home away from home" environment. Parents provide team meals, game day support such as concessions, and will be planning a future parent's weekend for out-of-state parents to come see the team in action.

For more information, please contact:
Jodi Vosika - jobadiah@cox.net

ASU WOMEN'S LACROSSE

www.asu.edu/studentprgms/orgs/womenslacrosse





MEN'S LACROSSE 2005 SCHEDULE

2005 WCLL Division A South -- US Lacrosse Men's Division Intercollegiate Associate

| DAY | DATE | TIME | OPPONENT |
|-----------------|--------|---|---------------------|
| SAT | FEB 12 | 1PM | MISSOURI |
| SUN | FEB 13 | 1PM | LOYOLA MARYMOUNT |
| FRI | FEB 18 | 4PM | UTAH |
| SUN | FEB 20 | 1PM | SONOMA STATE |
| SAT | FEB 26 | 1PM | BYU |
| MON | FEB 28 | 7PM | MICHIGAN |
| SAT | MAR 5 | 1PM | UCLA |
| SUN | MAR 6 | 1PM | FT. LEWIS COLLEGE |
| SAT | MAR 12 | 1PM | @ UC SAN DIEGO † |
| SUN | MAR 13 | 1PM | @ SAN DIEGO STATE † |
| SAT | MAR 26 | 1PM | CHAPMAN |
| SAT | APR 2 | 1PM | @ UC SANTA BARBARA |
| SUN | APR 3 | 1PM | @ USC |
| SAT | APR 16 | 7PM | @ ARIZONA † |
| APR 23 | | WCLL QUARTERFINAL PLAYOFF - LOCATION TBD | |
| APR 30 - MAY 1 | | WCLL CHAMPIONSHIPS - BERKELEY, CA | |
| MAY 10 - MAY 14 | | USL-MDIA NATIONAL CHAMPIONSHIP - BLAINE, MN | |

† Notes Divisional Opponent

NOTE: Admission to ASU Lacrosse games is free and does not require a ticket in advance. We do ask that everyone make a small donation to the program at the gate, but it is not required.

NO SEATING IS AVAILABLE at the Sun Devil Band Field. Please bring a folding chair if you wish to sit down.

ASU www.laxdevils.com **ASU**

The ASU Men's Lacrosse program needs your support!

Greetings:

The ASU Men's Lacrosse program needs your support! The team has a rich history having been on campus since 1968, winning league championships in 1995 and 1997. We compete for a league and national championship every year against the top club programs in the nation.

Unfortunately, we are not recognized as a varsity sport and have no affiliation with the ASU athletic department. Because of this, 90% of our funding comes from dues paid by players, some of whose parents can't afford to pay for their son to play lacrosse with us. It costs a minimum of \$75,000 to operate the team for 1 year. Our only funding outside of player dues is \$1150 from the ASU rec sports budget, leaving a rather large funding gap. The \$1150 from ASU barely covers half the cost for one player on our team (typically the roster size is 25 - 35 players)! We are trying to keep our player fees reasonable so we are seeking alternative supplemental funding. To stay on pace with other top programs, our budget is only going to grow over the next few years as we are forced to play a more national schedule. We currently charge our players \$1500 - \$1700 for the year that covers travel, league dues, uniforms, and referees. In addition, players are responsible for buying their own equipment and various expenses in the fall. That can cost up to \$500. As a former player at ASU, I understand how tough it can be to make these funds come together.

We understand that many individuals and businesses have contributed to or sponsored programs by providing funding, goods, and services to other ASU organizations and we hope you will consider lacrosse a worthy recipient. Your sponsorship can make a difference by helping provide safer travel, better equipment, and greatly easing the financial burden on students that play lacrosse at ASU, just to name a few.

Playing lacrosse at ASU is a tremendous opportunity and a large commitment for any student. Aside from financial commitment, players are typically devoting 20 hours a week to lacrosse. Add that to a full academic schedule and there is little time left over to maintain a job and income. Concerning opportunity, I can say from personal experience that it provides a family atmosphere between players who develop life-long friendships from being part of our team. In addition, students learn leadership skills, teamwork, and discipline.

We would appreciate the opportunity to discuss sponsorship opportunities with you and expand on what's involved in running our program. Further, we would like to invite you to see us play this spring when we make a run for a third division championship.

For more information about our program and support options, please visit: <http://laxdevils.com>.

Go Devils!
Thank you,
Jonathan Minder: Head Coach
ASU Lacrosse



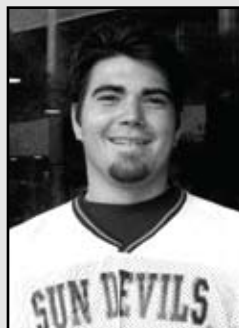
2005 ROSTER



BLAKE GANTT
#30
DEFENSE
FRESHMAN
6'2" / 195
Phoenix, AZ



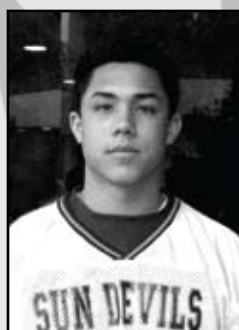
JAMES HEADLEY
#31
MIDFIELD
FRESHMAN
6'0" / 150
Scottsdale, AZ



KYLE ANGELINI
#32
MIDFIELD
FRESHMAN
5'11" / 180
Scottsdale, AZ



KEVIN FISHER
#33
DEFENSE
SOPHOMORE
6'2" / 195
Chandler, AZ



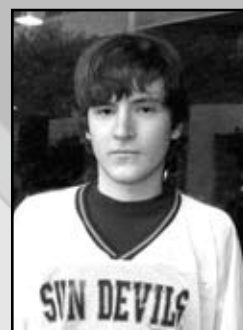
BRIAN LIU
#34
MIDFIELD
FRESHMAN
5'7" / 175
Los Gatos, CA



AUSTIN GRAY
#35
MIDFIELD
SOPHOMORE
6'0" / 180
Scottsdale, AZ



JOSEPH MATA
#36
DEFENSE
FRESHMAN
5'10" / 205
Phoenix, AZ



PAT O'MEARA
#37
MIDFIELD
FRESHMAN
5'10" / 150
Danville, CA



GEORGE CHESTEEN
#39
DEFENSE
FRESHMAN
5'10" / 160
Scottsdale, AZ



ALEX KALAL
#40
GOALIE
FRESHMAN
5'9" / 155
Phoenix, AZ

2005 ROSTER



Head Coach
Jonathan Minder



ASST. COACH
Chris Mathison



NICK CICHETTI
#1
MIDFIELD
JUNIOR
5'10" / 176
Merrimack, NH



GEOFFREY COOK
#2
MIDFIELD
SOPHOMORE
5'11" / 140
Littleton, CO



JAKE DELASHMIT
#3
GOALIE
SOPHOMORE
5'8" / 170
St. Louis, MO



MATT LEFKOWITZ
#4
ATTACK
SOPHOMORE
6'0" / 165
Yorktown Heights, NY



RORY STERN
#5
DEFENSE
FRESHMAN
5'8" /
Boca Raton, FL



RICKY HURLEY
#6
DEFENSE
SOPHOMORE
6'2" / 205
Great Falls, VA

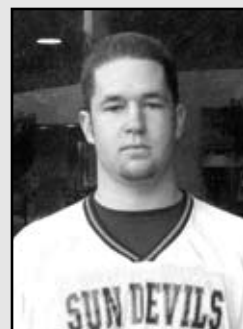


PATRICK BRENNAN
#7
MIDFIELD
FRESHMAN
6'0" / 165
Las Vegas, NV



MARTY AHERN
#9
MIDFIELD
SENIOR
5'8" / 175
Lake Zurich, IL

2005 ROSTER



JUSTIN DENAUX
#10
MIDFIELD
FRESHMAN
5'10" / 185
Spring Valley, CA



STEWART CHAN
#11
MIDFIELD
SENIOR
5'6" / 140
Plainview, NY



GREG BAUDO
#12
MIDFIELD
JUNIOR
5'11" / 160
Plano, TX



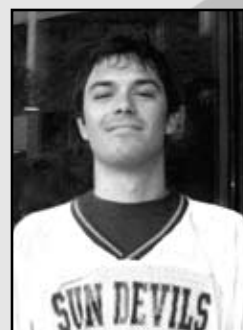
PETER NOEL
#13
ATTACK
FRESHMAN
5'10" / 165
Phoenix, AZ



ADAM CHRISTIE
#14
ATTACK
JUNIOR
6'3" / 185
Merrick, NY



CODY WOOD
#15
ATTACK
FRESHMAN
5'11" / 172
Phoenix, AZ



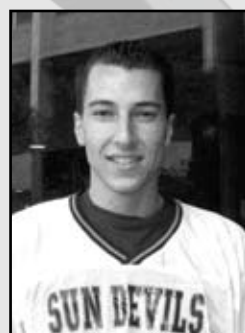
ERIC KARDESH
#16
DEFENSE
SENIOR
6'3" / 180
St. Charles, IL



PAUL KOMAR
#17
MIDFIELD
JUNIOR
5'9" / 185
Brick, NJ

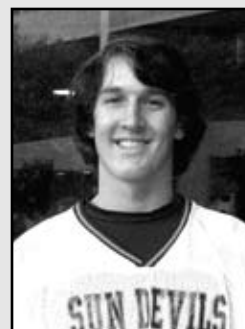


JON SAVINO
#18
MIDFIELD
FRESHMAN
6'0" / 165
Gilbert, AZ



JARED BELLAR
#19
LS MIDFIELD
SOPHOMORE
6'2" / 165
Phoenix, AZ

2005 ROSTER



BEN VOSIKA
#20
MIDFIELD
FRESHMAN
6'2" / 185
Gilbert, AZ



JOHN YANAN
#21
DEFENSE
FRESHMAN
6'0" / 205
Souderton, PA



NICK JOHNSON
#22
MIDFIELD
FRESHMAN
5'10" / 170
Maple Valley, WA



JEFF PILON
#23
ATTACK
JUNIOR
5'11" / 175
Gilbert, AZ



MICHAEL ELLIS
#24
ATTACK
JUNIOR
5'6" / 140
Scottsdale, AZ



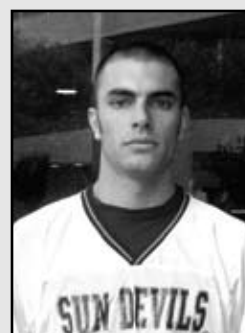
TOMMY SOTIROPULOS
#25
DEFENSE
FRESHMAN
5'10" / 190
Concord, CA



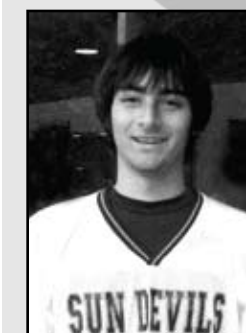
JASON BELLAR
#26
MIDFIELD
SOPHOMORE
5'11" / 150
Phoenix, AZ



ANDREW GOSHGARIAN
#27
MIDFIELD
JUNIOR
5'9" / 175
Roundlake, IL



KEVIN DE ST. AUBIN
#28
MIDFIELD
FRESHMAN
6'0" / 170
Commack, NY



ADAM JENSEN
#29
MIDFIELD
FRESHMAN
5'9" / 160
Scottsdale, AZ