



Tuition

Tuition is \$475. It must be paid by June 1st. We accept Master Card or Visa payments over the phone. Reduced tuition is available to help families who cannot afford the full tuition. To apply for reduced tuition you must complete the reduced tuition application included in the registration packet. Please note that a reduction is not available for LUNCH BUNCH.



Assessments

When you return your registration packet and deposit (\$100) we will call you to schedule two 1.5 hour assessment appointments. We will complete a speech and language and early literacy assessment to help our teachers and clinicians individualize instruction for your child. If you give permission for your child to participate in research they will complete additional assessments that are described in the parent research permission form. You will receive a written report of assessment results about the second week of the program. We request that you provide a copy of your child's most recent IEP, if applicable, to also help us plan instruction.

What to Wear

Please dress your child in comfortable casual play clothes and TENNIS SHOES. No sandals please.



Open House!



Thursday, May 28th

6:30-7:30 pm

Both Campuses

Please bring your family and especially your child who will attend SPELL so that you can meet all of our staff and see the classroom. We will show you where to drop off and pick up, show your child their cubby, and have an opportunity to answer any last-minute questions.

Clinical & Research Faculty

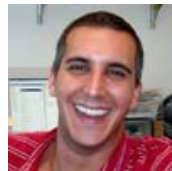
Cathy Bacon, M.A., CCC-SLP

Shara Brinkley, M.S., CCC-SLP



Anthony Koutsoftas, M.S., CCC-SLP

Pradyumn Srivastava, M.S.



<http://chill.asu.edu>



Summer Program for Early Literacy and Language



A-5 Year Olds

June 1 - July 1

Monday through Thursday

Tempe Campus
8:30-11:30 or 12:30-3:30

West Campus
8:15-11:30 or 12:15-3:30

Tuition \$475
(Reduced tuition is available)



Lunch Bunch
11:30-12:30
\$5 per day

Arizona State University
Department of Speech & Hearing Science

Tempe Campus
Coor Building

West Campus
Classroom Annex (CRNX)

(480) 965-2373





Summer Program for Early Literacy and Language (SPELL)

SPELL is a research and educational program designed to boost the oral language and early literacy skills of 4 and 5-year-olds through fun and interesting teaching activities. Classes are taught by certified teachers or speech-language pathologists and graduate students from the Department of Speech and Hearing Science at ASU.

The program includes:

- 2 hours of classroom time
- 1/2 hour of small group language therapy
- 1/2 hour of word learning play-based research



How children qualify:

- Show age-appropriate development on a nonverbal test of thinking skills
- Be developing typically or have a diagnosed language impairment
- Speak English as their primary language

Children who do not meet these criteria may attend the program if research openings are not filled by other children and if the child demonstrates developmental skills in the 4-5 year-old range

Classroom Time

Children will participate in teaching activities to increase oral language and early literacy skills including:

- Phonological awareness
- Alphabet knowledge
- Vocabulary
- Emergent writing
- Story telling and retelling
- Book reading



Language Therapy

Children will work 30 minutes per day in small groups with a graduate student in speech-language pathology under the supervision of a certified speech-language pathologist. Teaching activities will address speech, language, and early literacy goals from the child's Individual Education Plan and those identified as priorities by parents and assessment results. Children who do not have IEPs can participate as peer role models or continue in their ongoing classroom activities.

Research

Children will work 30 minutes per day with a research assistant in a separate room from the classroom. The research study is investigating the best methods for teaching new vocabulary to young children. Children learn new words while they play with Playmobile sets. Children cannot participate in research without parent permission. Children who do not participate in research join other children for educational games.



Tempe or West Campus?

Morning or Afternoon?

Please indicate your preference for the Tempe or West campus and the am or pm class on the registration form. We will fill these requests in the order we receive them. If your requested location or time is not available we will ask if you would like to attend the location or time that is available. The programs will be identical in content but will have different teachers and graduate students.

Lunch Bunch



If you would like to extend your child's day by 1 hour we invite them to attend LUNCH BUNCH. Children will be supervised by morning or afternoon teaching assistants. Your child will need to bring their lunch and drink to eat in the classroom with their friends. After eating, they will have the opportunity to play games and hear music and a story. Each Thursday you must reserve your child's space in lunch bunch for the following week and pay \$5 per day for each day they will attend. You may reserve any or all of the days.

Drop Off and Pick Up



Beginning 10 minutes before the start of class you may drop your child off. At the end of class (or lunch bunch) you must pick your child up and sign them out within 10 minutes or pay a late fee of \$1 per minute in cash that same day. You are welcome to park and take your child to the classroom or stay and observe, but you must pay for parking in either case.