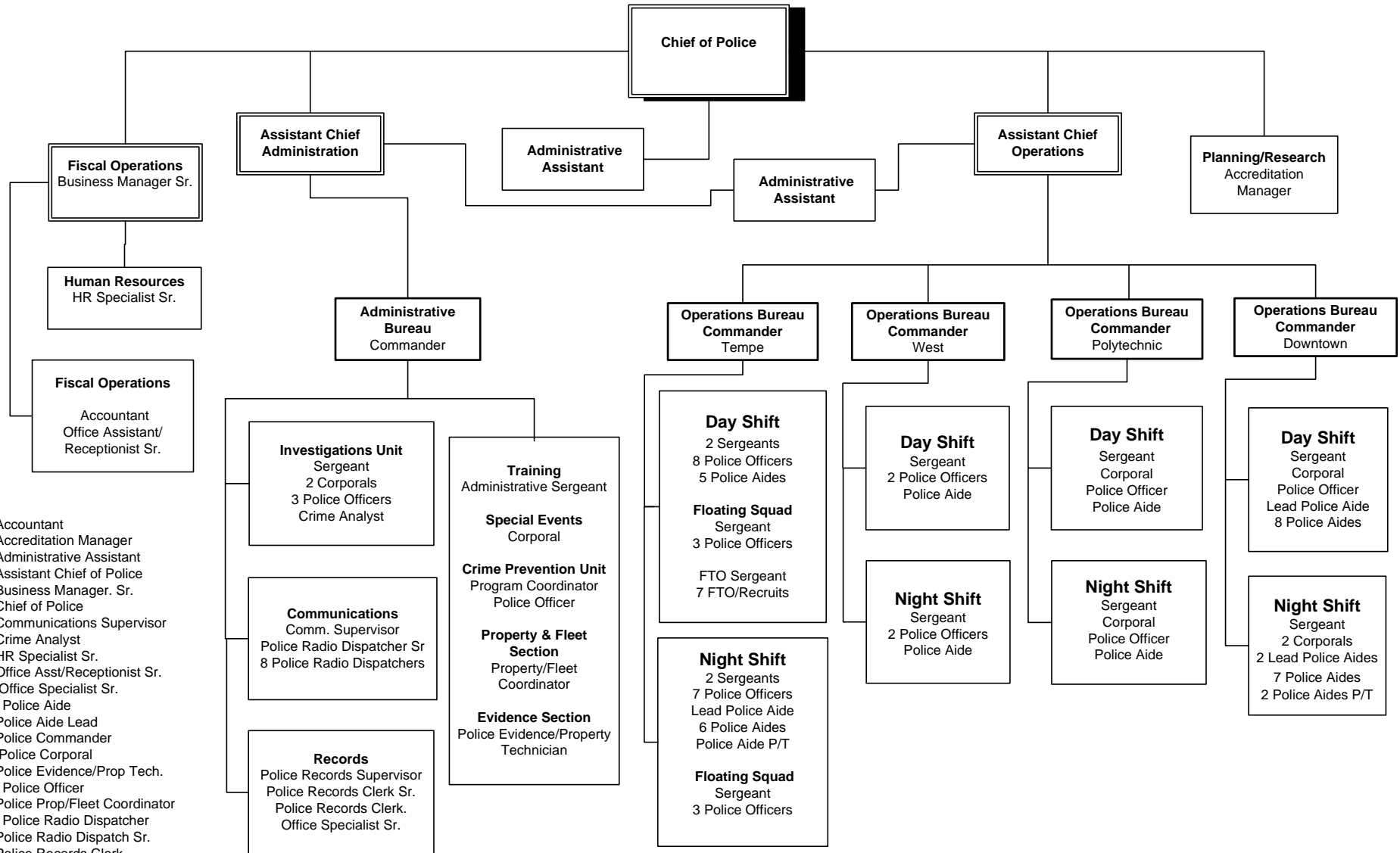


**ARIZONA STATE UNIVERSITY  
POLICE DEPARTMENT  
ORGANIZATIONAL CHART - 2011**



- FTE**
- 1.0 Accountant
  - 1.0 Accreditation Manager
  - 2.0 Administrative Assistant
  - 2.0 Assistant Chief of Police
  - 1.0 Business Manager. Sr.
  - 1.0 Chief of Police
  - 1.0 Communications Supervisor
  - .50 Crime Analyst
  - 1.0 HR Specialist Sr.
  - 1.0 Office Asst/Receptionist Sr.
  - 1.0 Office Specialist Sr.
  - 37.0 Police Aide
  - 4.0 Police Aide Lead
  - 5.0 Police Commander
  - 8.0 Police Corporal
  - 1.0 Police Evidence/Prop Tech.
  - 40.0 Police Officer
  - 1.0 Police Prop/Fleet Coordinator
  - 12.0 Police Radio Dispatcher
  - 2.0 Police Radio Dispatch Sr.
  - 1.0 Police Records Clerk
  - 1.0 Police Records Clerk Sr.
  - 1.0 Police Records Supervisor
  - 15.0 Police Sergeant
  - 1.0 Program Coordinator

TOTAL FTE 140.50  
(71 Sworn FTE)