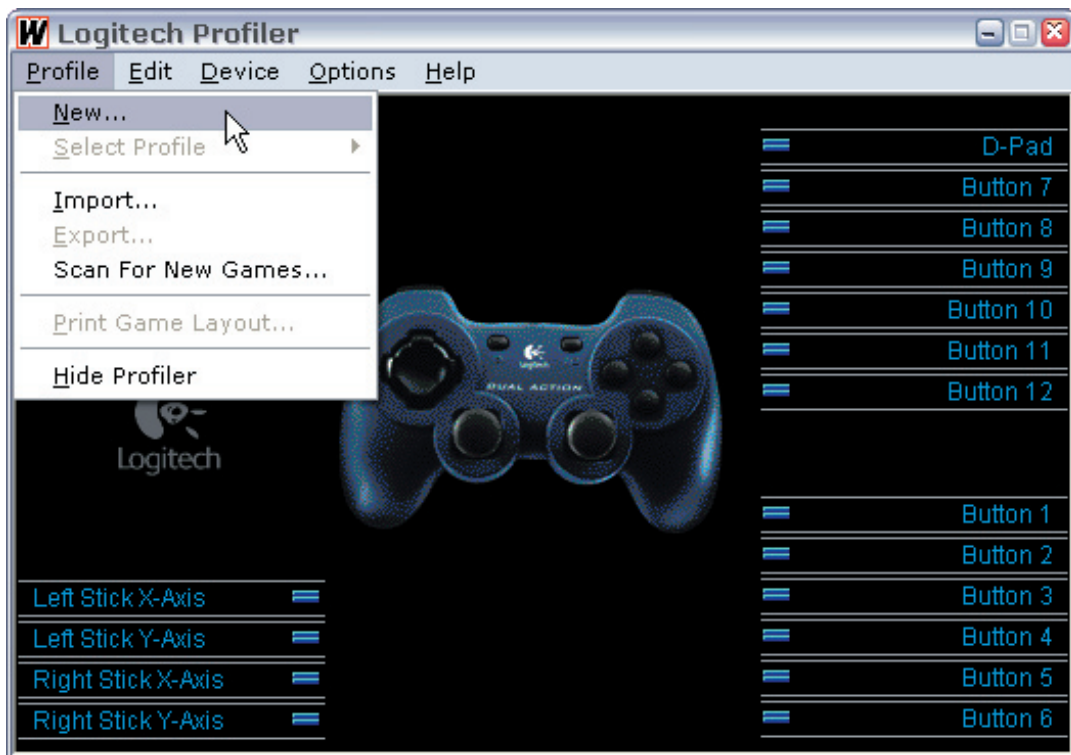
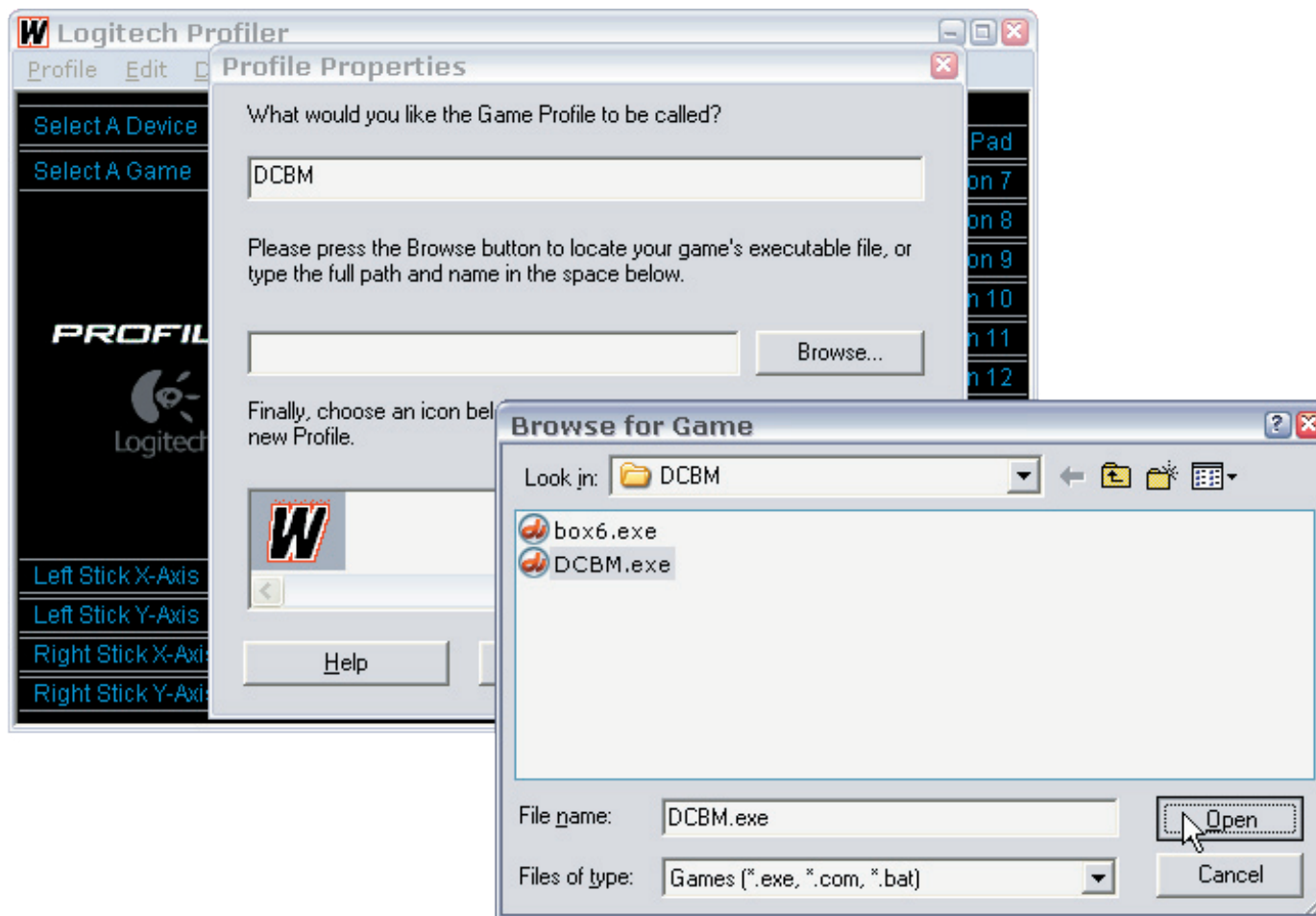


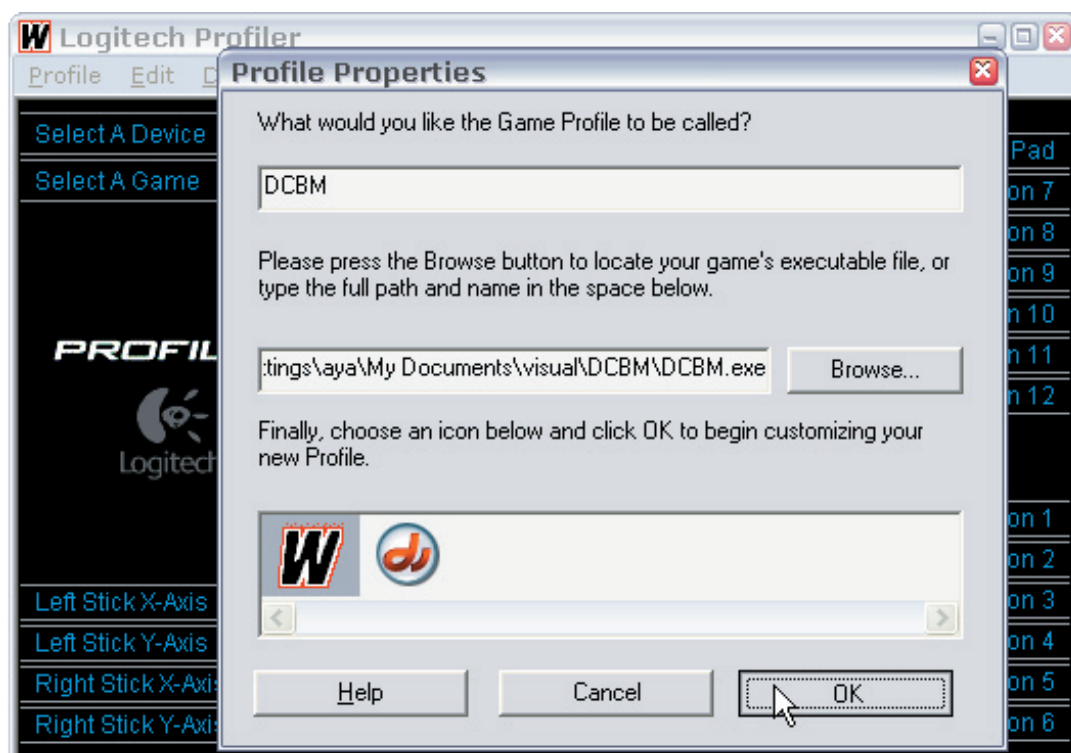
1. To map the joystick to DCBM, select Start > Programs > Launch Logitech Profiler
2. Create a new profile by selecting Profile > New



2. Name the profile DCBM.
Next, Browse to the location of DCBM.exe and click Open



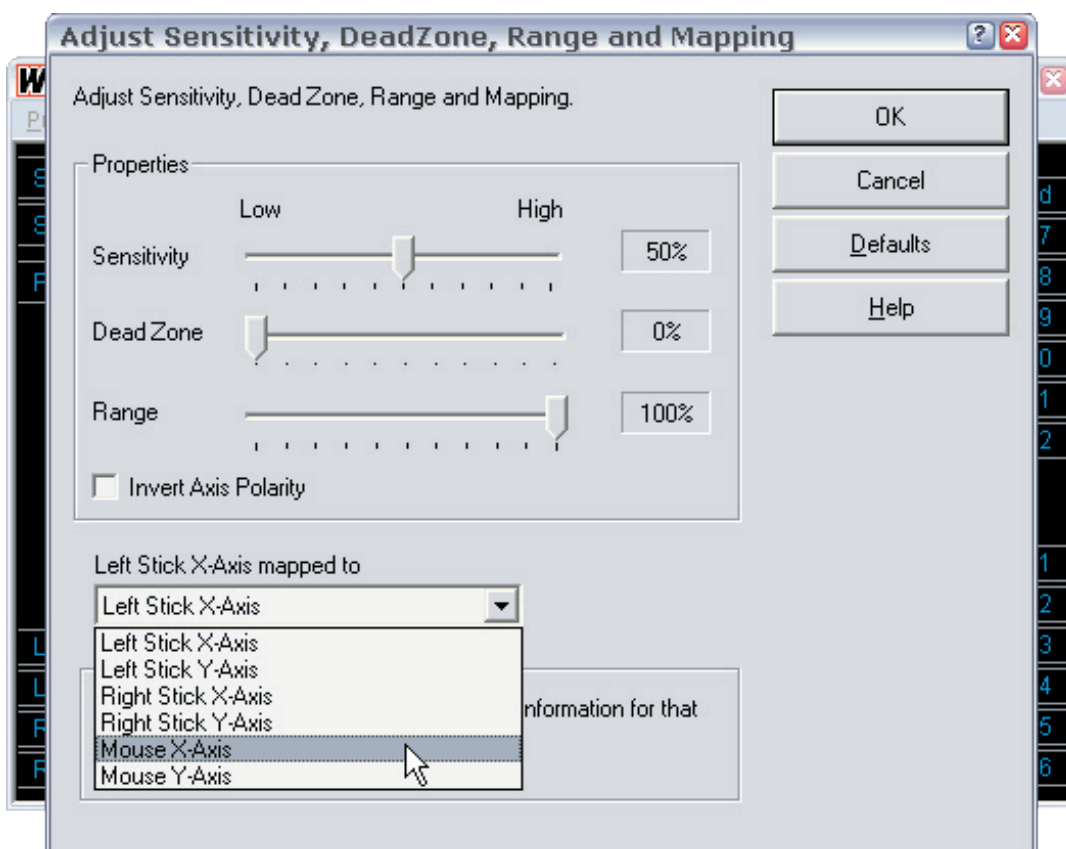
3. Select an icon in the final step, then click OK.



4. Next, we map the X- and Y-Axis of the left stick to the mouse X- and Y-Axis. Select Left Stick X-Axis > Axis Properties...



5. For “Left Stick X-Axis mapped to” in lower part of dialog box, use drop-down menu to select “Mouse X Axis”. Click OK.



6. Now select Left Stick Y-Axis > Axis Properties... for “Left Stick Y-Axis mapped to” in lower part of dialog box, use drop-down menu to select “Mouse Y Axis”. Click OK.

