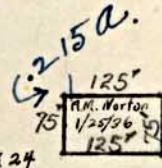
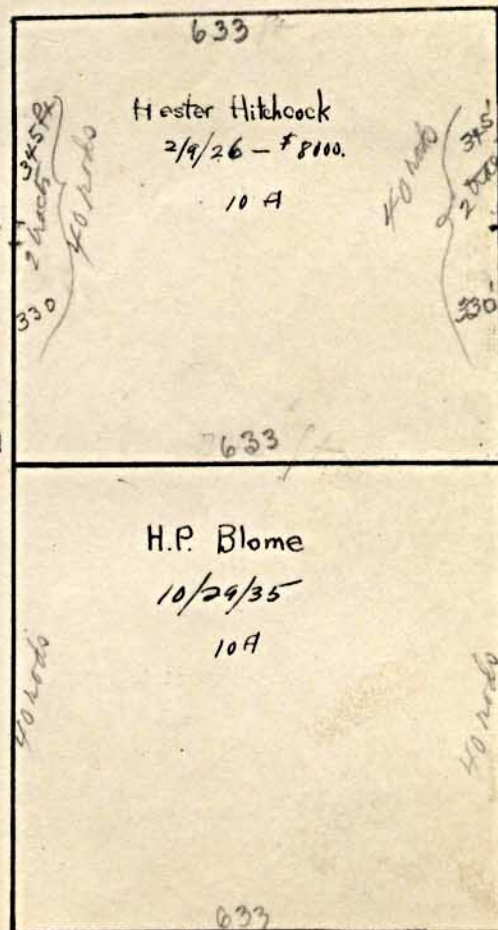
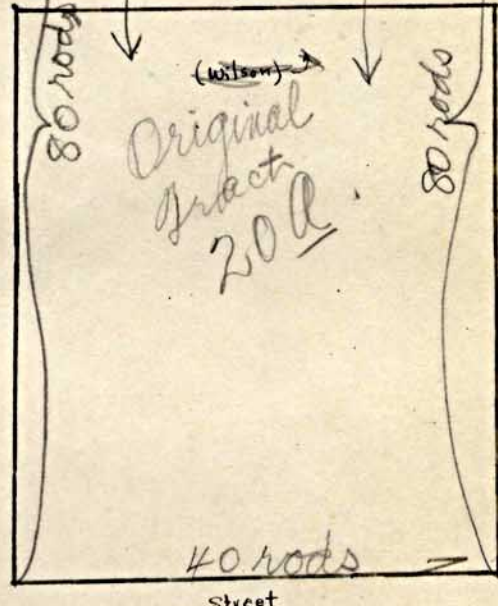
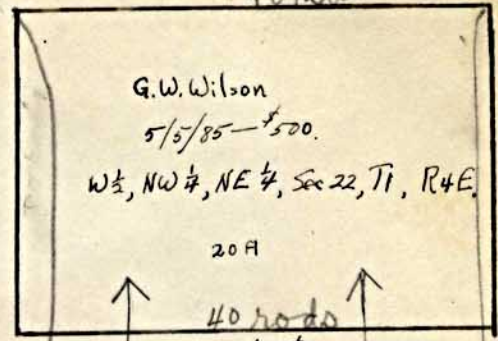


Eighth street 40 rods

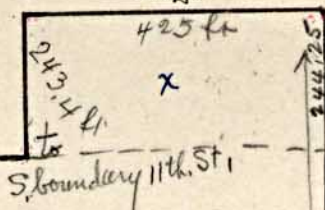
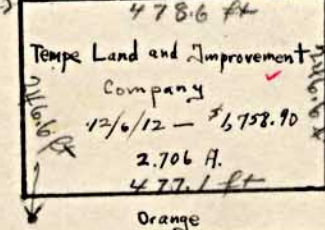


BLOCK 24

9 Rae. Finch	10 A. Nelson
7/14/12 - \$747.50	9/4/12 - \$675.00
11 A. Berkenkemp	10 Chas. Woolf
8/20/12 - \$761.20	12/2/12 - \$595.00

Ninth Block 25

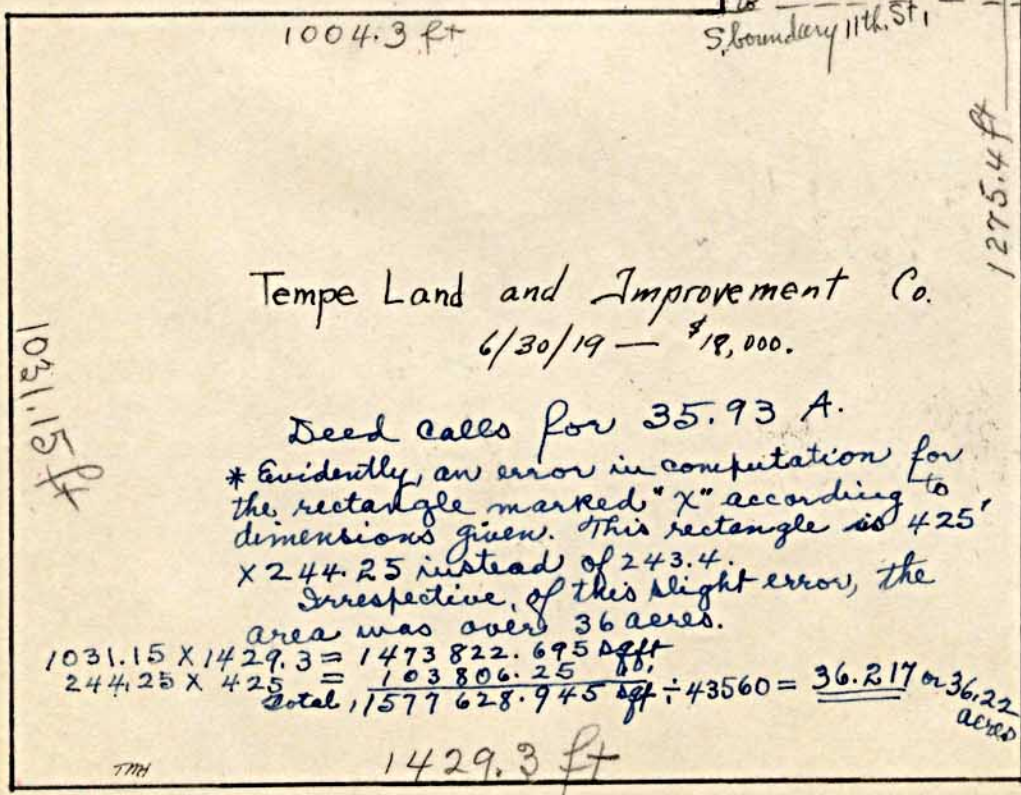
11 H.A. Matthews	12/1/11 - \$930.
10 Woolf, et al. (A.S. Co.)	6/3/11 - \$379.
10 M.C. Nichols	9/4/12 - \$42.35
10 G.R. Finch	9/10/12 - \$799.50
10 R.M. Murphy	8/21/12 - \$420.
10 H.A. Matthews	8/23/12 - \$951.50



Note:
 I Numbers in circles, ⑩, indicate lot numbers.
 II Block 24 lies between Eighth street and Ninth Street. Block 25 lies between Ninth and Tenth Street. X.

10th Street

Tempe Grammar School.



Tempe Land and Improvement Co.
 6/30/19 - \$18,000.

Deed calls for 35.93 A.

* Evidently, an error in computation for the rectangle marked "X" according to dimensions given. This rectangle is 425' X 244.25 instead of 243.4. Irrespective of this slight error, the area was over 36 acres.

$$1031.15 \times 1429.3 = 1473822.695 \text{ sq ft}$$

$$244.25 \times 425 = 103806.25 \text{ sq ft}$$

$$\text{Total } 1,577,628.945 \text{ sq ft} \div 43560 = 36.217 \text{ or } 36.22 \text{ acres}$$

1429.3 ft

Center point of Section 22, T1, R4E.