

ASU VirusScan 8.5i AutoUpdate and Scheduling

COMMUNICATIONS

2/2007

AutoUpdating

Even if you have just installed NAI VirusScan, you should still install the updates.

Installing updates on a regular basis will ensure that your computer has the best virus defense protection available.

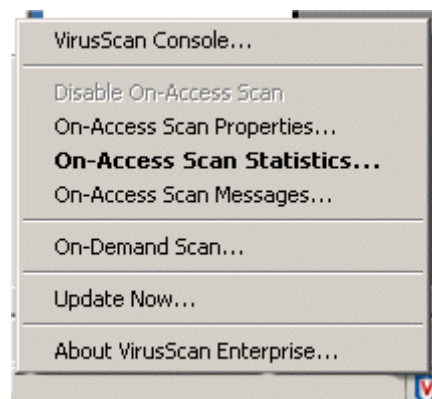
The **AutoUpdate** feature will save you time; you do not have to connect to a Web Site, download the SDAT file and then install the SDAT. **AutoUpdate** will connect itself to the repository and update your VirusScan software. AutoUpdate is an incremental process, if you update regularly it should not take long to install the latest Virus Definitions and Scan Engine.

The **AutoUpdate** feature is already configured in ASU's release of VirusScan 8.5.

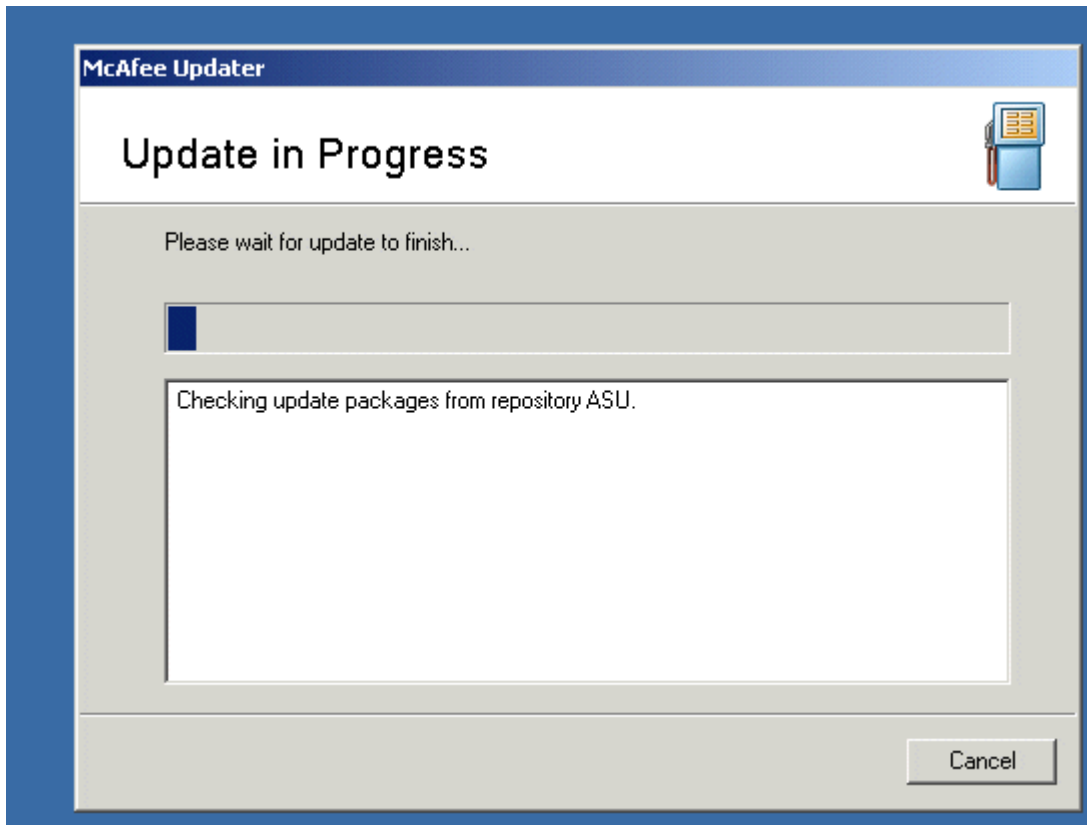
The manner in which you regularly update VirusScan will depend on your connection to the Internet. If your connection to the Internet is constant you may want to set up the automatic scheduler. If your computer is turned off frequently or you use a dial-up connection you will want to manually update VirusScan daily. The choice is yours depending on which way is more convenient. However, you should verify your VirusScan is updated to prevent any new viruses from attacking your computer.

Running AutoUpdate

- Make sure you have a Network Connection.
- Right click on the **VShield** in your system tray.
- Left click on **Update Now...**

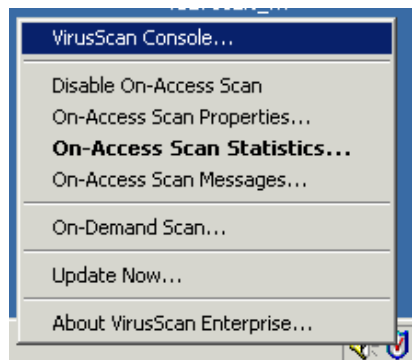


- The McAfee Updater window will open and connect to the repository to update VirusScan to the latest antivirus engine and virus definitions. No user intervention should be required.

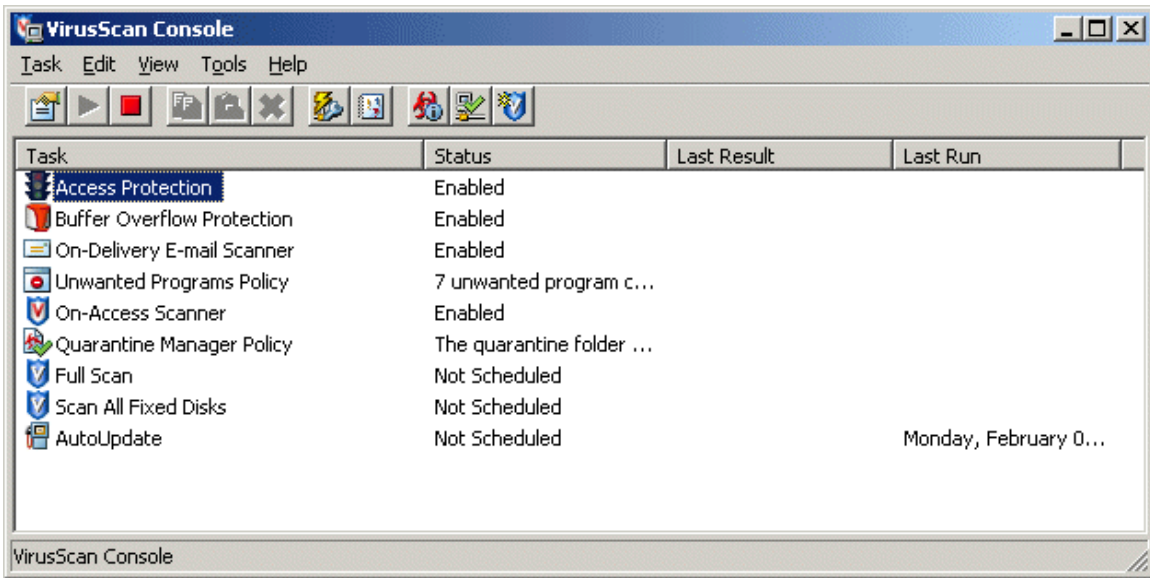


Scheduling Updates for Virusscan

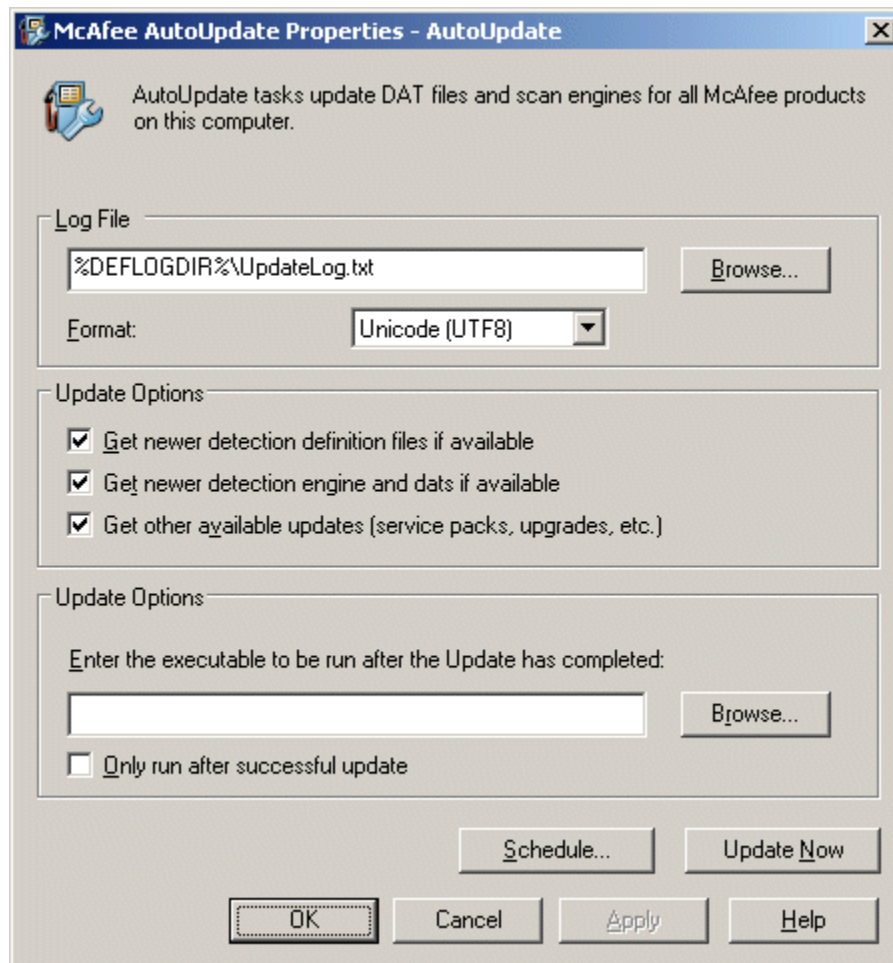
- If you do not want to manually schedule the **AutoUpdate** we have file that will schedule **AutoUpdate** for you. Download the file **schedule.exe** (<http://www.asu.edu/it/security/software/html/antivirus/download.htm>) to your computer. Double click on the file **schedule.exe** after downloading it. This will schedule VirusScan to **AutoUpdate** Monday through Friday at 12:05 PM.
- To manually schedule AutoUpdate, right click on the **VirusScan Shield** in your system tray and click on **VirusScan Console...**



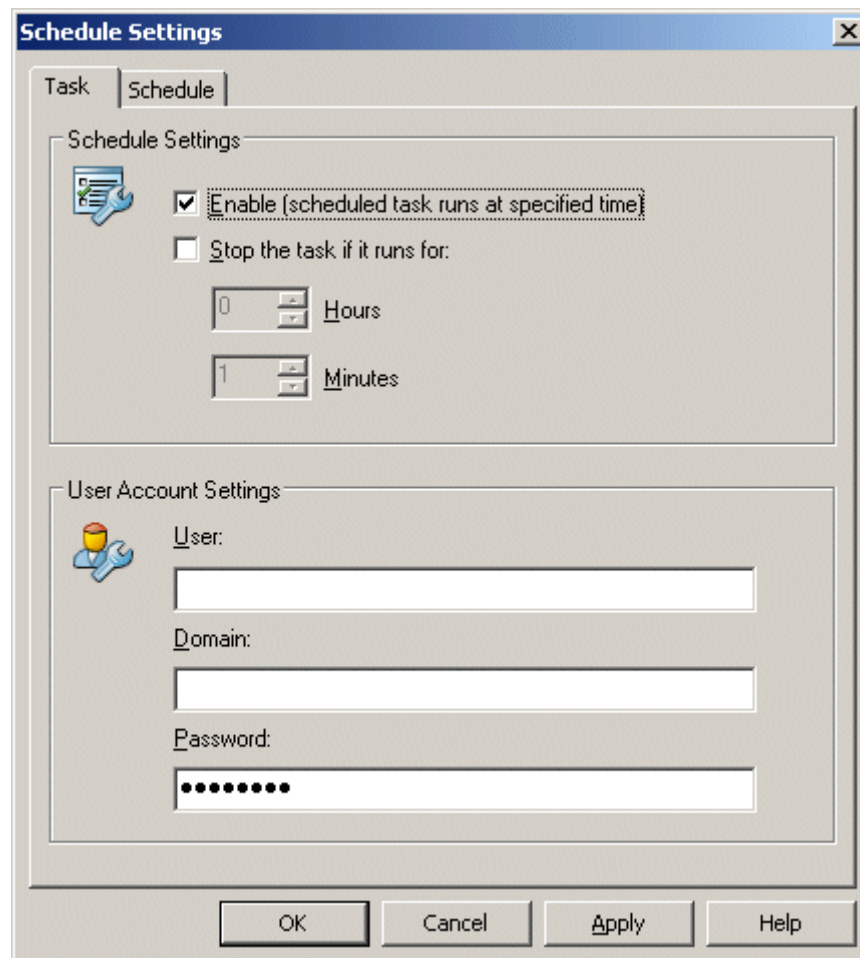
- Double click on **AutoUpdate** in the **VirusScan Console** window.



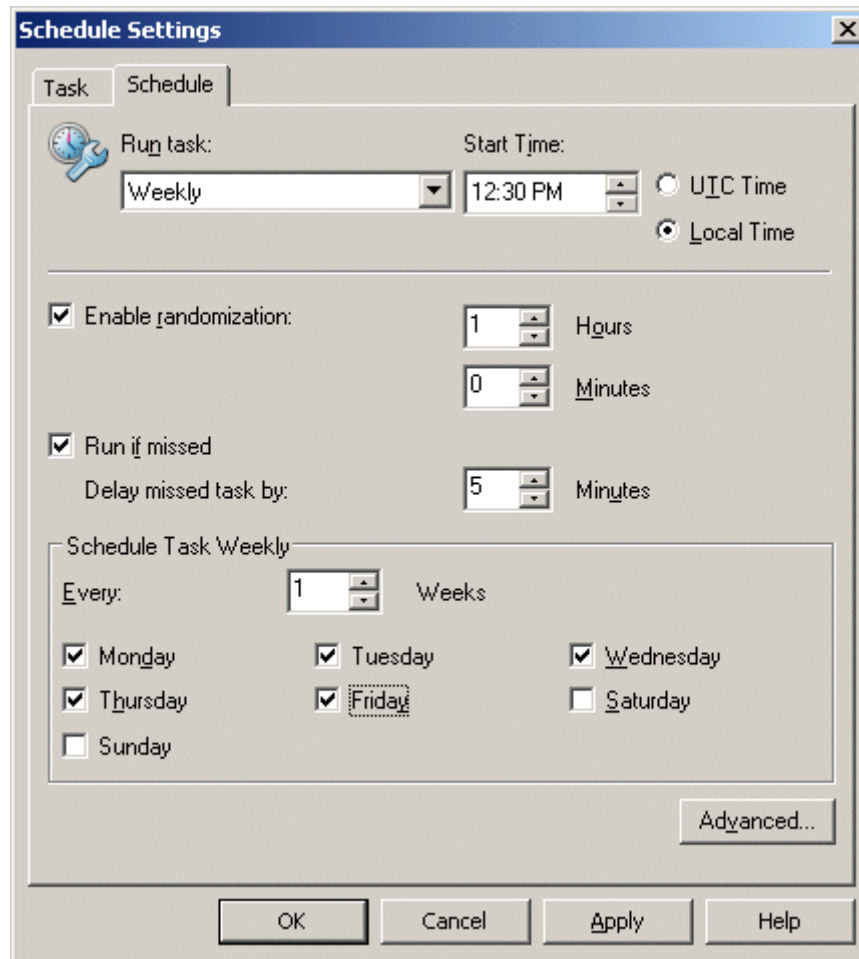
- Click on the **Schedule...** button.



- On the **Task** tab click in the box next to **Enable (scheduled task runs at specified time)** a check mark should appear (you do not need to enter anything in **User Account Settings**).



- On the **Schedule** tab set the **Schedule Task:** to **Weekly**, set the **Start Time:** to what you want We recommend selecting **Mon, Tue, Wed, Thu and Fri** since updates only come out on these days.



- Click the **OK** button on the two open windows and close **VirusScan Console**. Autoupdate is now set up to run automatically on the days you selected at the time you set.