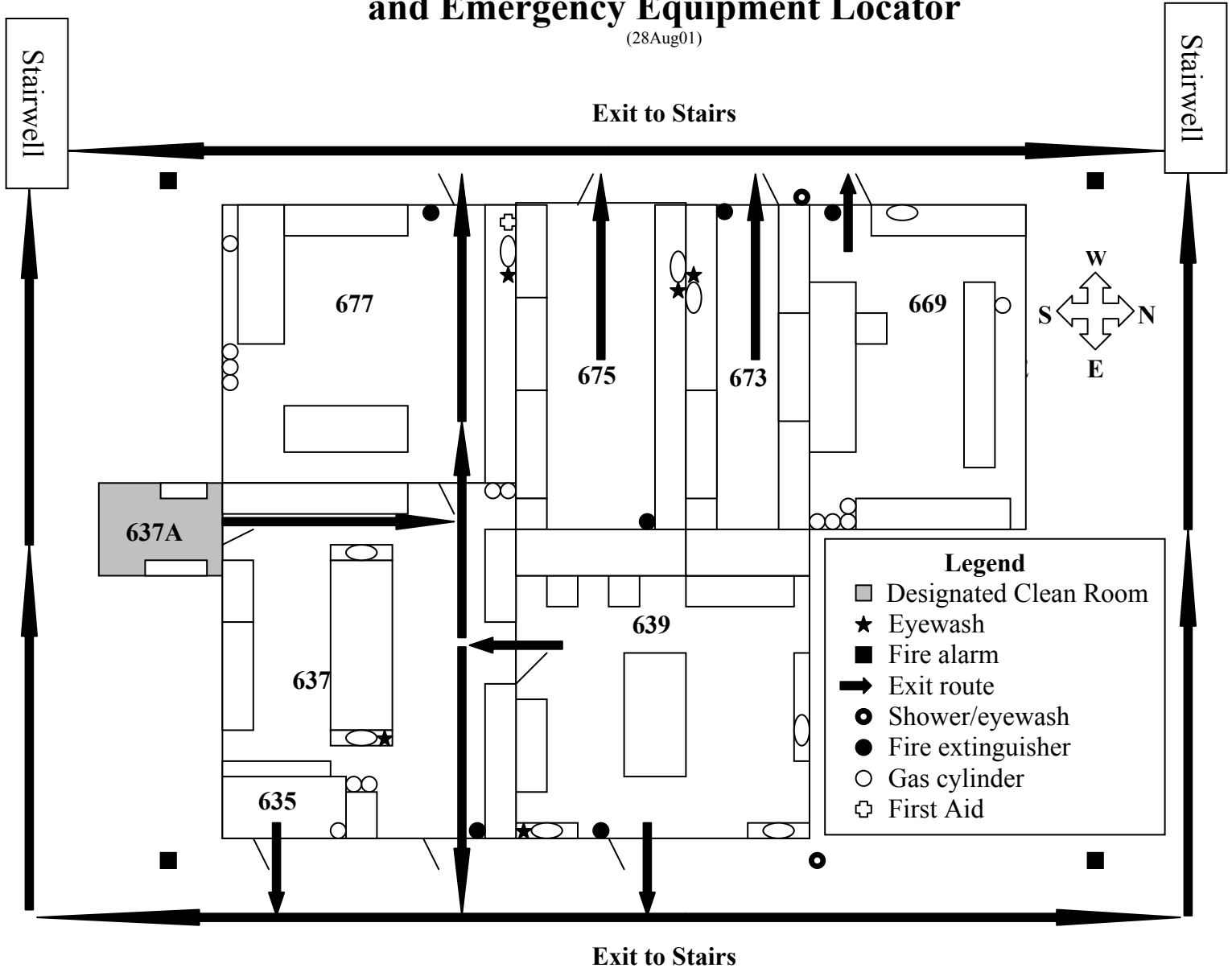


Goldwater Environmental Lab Emergency Evacuation Plan and Emergency Equipment Locator

(28Aug01)



Evacuation Procedure

1. **Walk** to the nearest exit as shown above. If it is blocked use alternate exit. (DO NOT USE ELEVATORS!!!)
2. **Assist** persons with special needs (call ASU police at 9-1-1)
3. **Notify** emergency crews if you suspect someone is trapped in the building.
4. **Gather** on lawn (retention area) between Goldwater Center and University Drive. Lab Supervisor will take roll and account for all personnel. It is important that you check in since otherwise it will be assumed you are still in the building.