

# Data Surfing With BrioQuery - Exercise 1

The Data Surfing series of exercises is designed to teach you basic query, or question asking skills using BrioQuery 6.6 with sample Student data. The data used is fictitious and it resides in the TRAINING database here at ASU. Each lesson describes objectives covered, and provides hands-on, detailed directions how to do various query tasks. The “cookbook” part of the lesson is followed by an "on your own section" designed to reinforce skills learned and give you a chance to practice.

## LOGGING ON TO A DATABASE AND LOGGING OFF

In this exercise, you will use a connection file that is attached to a Blank Query to log on to the Data Warehouse. For those that use ASSIST with a web browser, this is similar to logging on to the Brio web page and opening the Blank Query. You will enter the user ID, password, and database name to access the TRAINING database. The TRAINING database is a simple, small database containing sample, student data that you will use to get aquatinted with doing queries. After viewing the tables that contain data, you will log off.



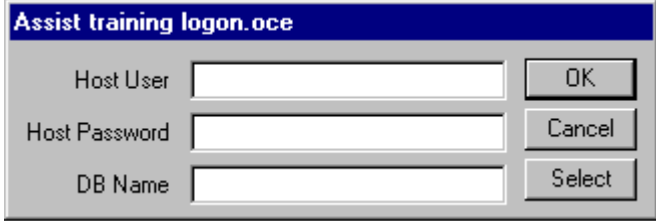
**Tool Objectives** – this is what you will learn in this Exercise when you go thru the Cookbook section that follows.

1. Use the Blank Query to log onto the TRAINING database.
2. Bring up a table list of data available.
3. Become familiar with the layout of the Brio Query Section.
4. Logoff the database by Exiting BrioQuery.

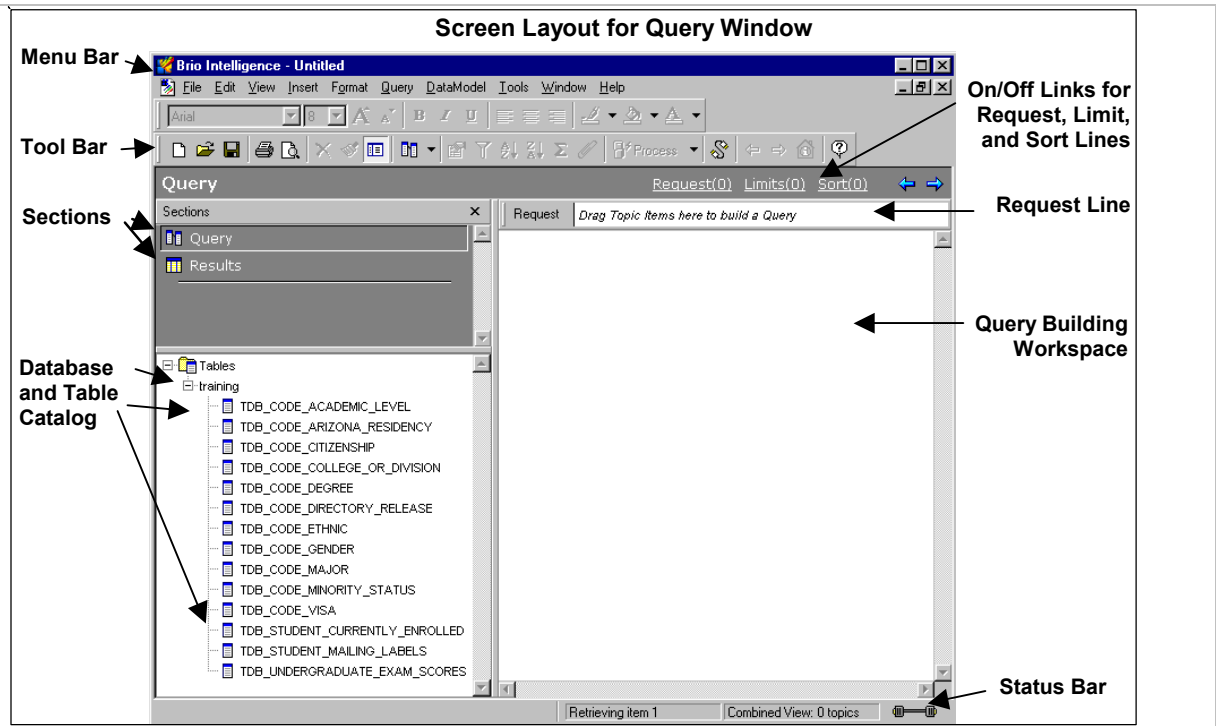
## Data Objectives

1. Differentiate Code tables from Data tables by their titles.
2. Describe the difference between Code tables and Data tables.

## COOKBOOK

What You Do	Comments/Questions
1. Double Click on the <b>Training Query</b> icon on your Desktop	BrioQuery software will start up and open to a blank query.
2. Click on the <b>+</b> sign in front of the tables folder in the bottom left frame. (  Tables )	 <p>Click here to log on. The log on box will appear.</p>
<p>3. Click in the box titled <b>Host User:</b> and type <b>train1</b></p> <p>Click in or tab to the box titled <b>Host User:</b> and type <b>training</b></p> <p>Click in or tab to the box titled DB Name and type <b>TRAINING.</b></p>	 <p>The password will appear as asterisks so no one can see it. The password <u>must be in lower case letters</u>. The <b>password</b> is the ONLY thing on the database that is <b>case sensitive</b>. Notice the Database Name is “training.” Database names are NOT case sensitive.</p>
4. Click <b>OK</b> to log on to the TRAINING database.	A list of data tables is in the left bottom corner.
6. Make the table frame wider so you can see the names of all the tables.	You can click, hold and drag on the edges of frames to change their size.

7. Notice you are in the Query section. The Query icon is selected in the top left Section frame (looks depressed). Observe the general layout of the Query section.



8. Look at the **Menu Bar**..

**File, Edit, View, Insert, Format, Query, DataModel, Tools, Window, and Help** are the menu choices.

9. Look at the **Tool Bar**.

The default Tool Bar has icons for creating a New query, Opening a saved query, Saving a query, Printing, and Toggling to Print Preview. Additional buttons become highlighted when building a query.

10. Look at the **Request Line**.

This is where you drag data elements that you would like to see in your output or results. The rectangle with the word Request is also a button that performs certain query building functions.

11. Look at the <b>Sections</b> frame.		The sections area shows you the different BrioQuery sections that are in the Brio document. The Query section is where we build queries (or questions). The Results section is where we receive the answer to our query. The Insert Menu above has many other types of sections that can be inserted into your documents for charts and reports.
12. Look at the <b>Database and Table Catalog</b> frame.		<p>There is a folder for each database you are logged on to.</p> <p>Each line under the database folder is the name of a spreadsheet full of data. These tables (or spreadsheets) are available for you to pull data out of.</p> <p>All the table names start with TDB (<u>T</u>RAINING <u>D</u>ata<u>B</u>ase). Code tables have the word CODE next. How many tables are NOT Code tables?  _____ These data tables are the ones we will query primarily.</p>
13. To logoff, click <b>File</b> on the Menu Bar, then <b>Exit</b> . Click <b>NO</b> when it asks to save the file.		You are now disconnected from the data source. NOTE: each query in Brio is separately connected to the data source.

---

## ON YOUR OWN

1. Log on to the TRAINING Database on your own now. For the next exercise you should be logged on and have the table list (TABLE CATALOG) visible in the left bottom corner of the screen.
2. Review the objectives covered on your crib sheet. Jot down a short note for each objective to remember how to do each task.