

ASU VirusScan 4.5.1 with SP1 AutoUpdate and Scheduling

COMMUNICATIONS

3/2005

AutoUpdating

Even if you have just installed NAI VirusScan, you should still install the updates.

Installing updates on a regular basis will ensure that your computer has the best virus defense protection available.

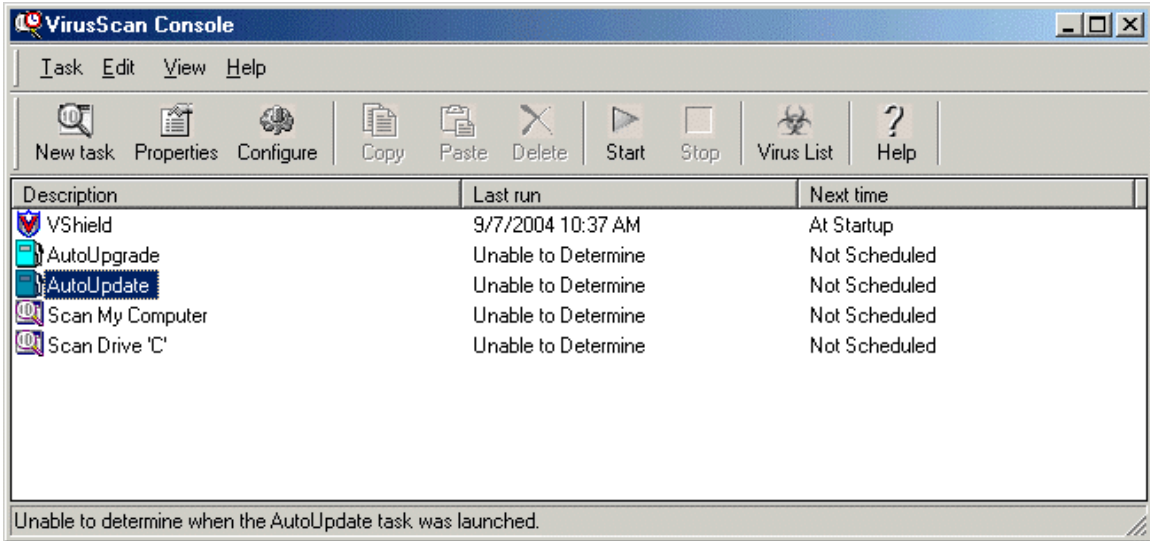
The **AutoUpdate** feature will save you time; you do not have to connect to a Web Site, download the SDAT file and then install the SDAT. **AutoUpdate** will connect itself to the NAI server and update your VirusScan software. AutoUpdate is an incremental process, if you update regularly it should not take long to install the latest Virus Definitions and Scan Engine.

The **AutoUpdate** feature is already configured in ASU's release of VirusScan 4.5.1 with SP1.

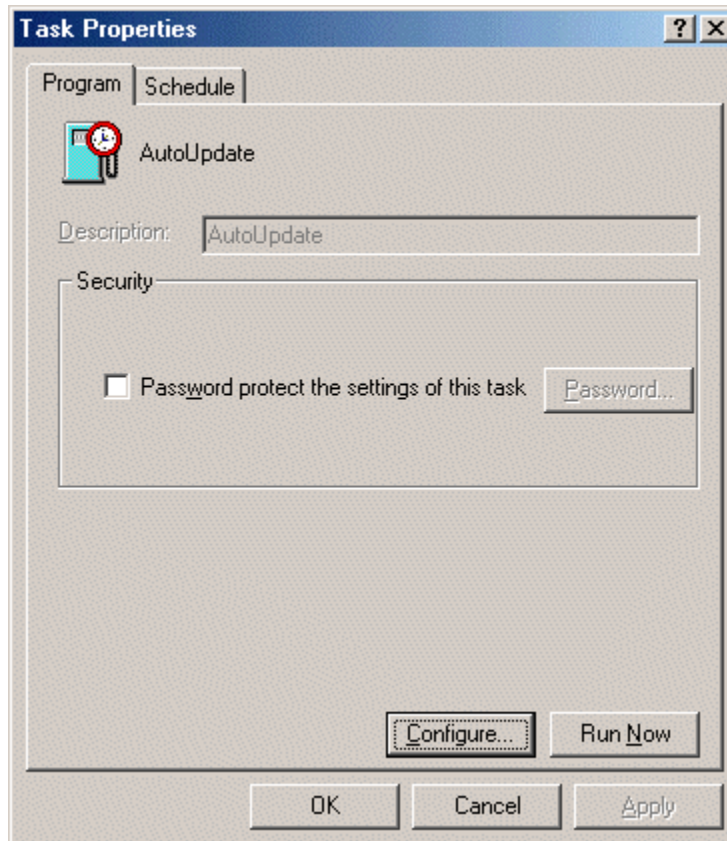
The manner in which you regularly update VirusScan will depend on your connection to the Internet. If your connection to the Internet is constant you may want to set up the automatic scheduler. If your computer is turned off frequently or you use a dial-up connection you will want to manually update VirusScan weekly. The choice is yours depending on which way is more convenient. However, you should verify your VirusScan is upgraded weekly to prevent any new viruses from attacking your computer.

Running AutoUpdate

- Make sure you have a Network Connection.
- You need to open the **VirusScan Console**. To open the Console, click the **Start** button, select **Programs**, then **Network Associates**. Finally, click on **VirusScan Console** so that the following menu appears.

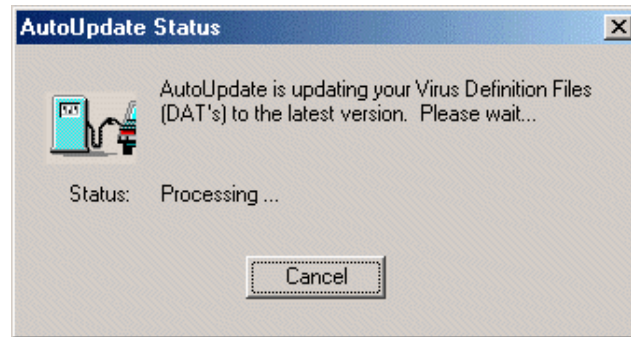


- Next, double click on **AutoUpdate** in the **VirusScan Console** window. The **Task Properties** window will open.



In **Task Properties** Window, click on the **Run Now** button.

- You should see the following window appear while the process is upgrading.



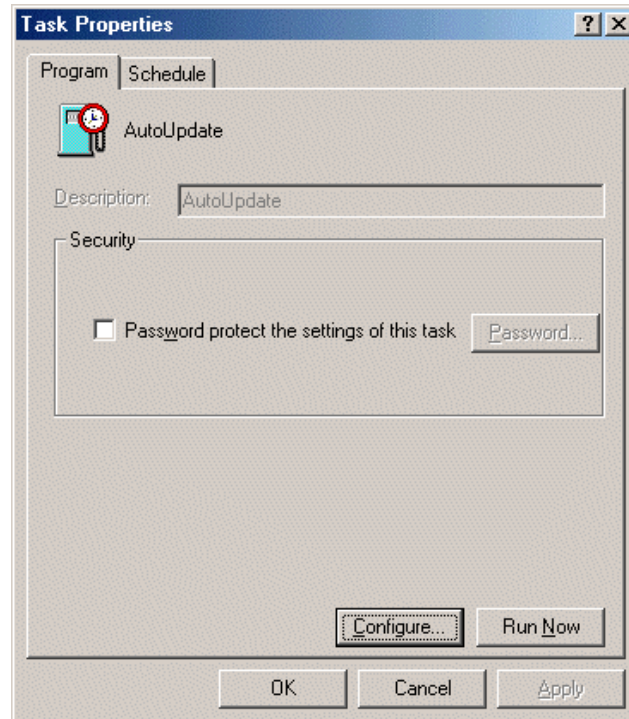
- Your computer is now updating with the latest Virus Definitions and Scan Engine. When the process has completed you can close the Windows you opened. Be sure to upgrade your VirusScan software on a regular basis.

Scheduling AutoUpdate

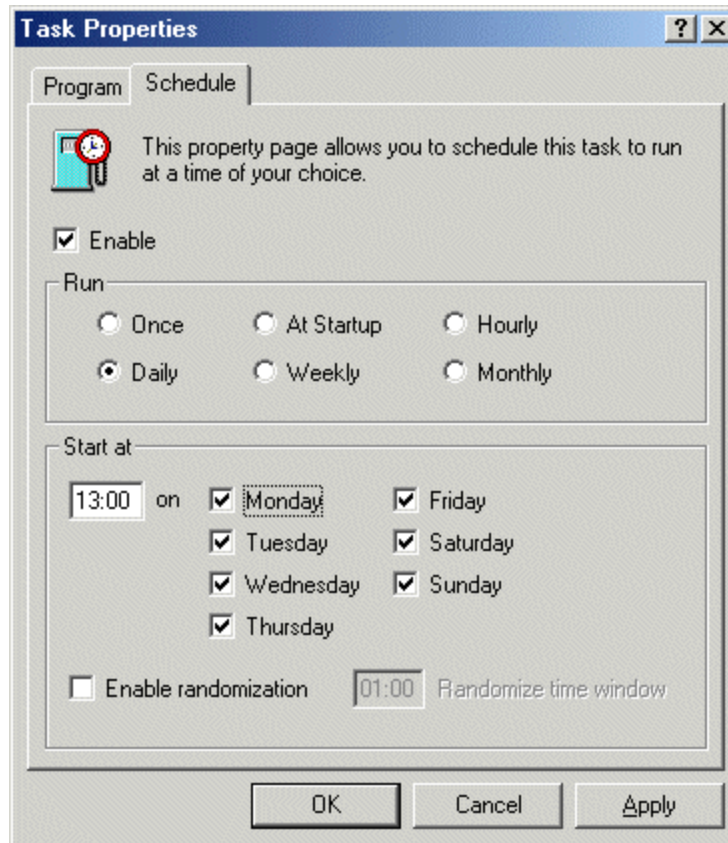
If your connection to the Internet is constant you may want to set up the automatic scheduler. However, you should verify your VirusScan is updated to prevent any new viruses from attacking your computer.

Configuring the Automatic Scheduler

- Open the **VirusScan Console** again and click on **AutoUpdate** so the **Task Properties** window opens.



- In **Task Properties** Window, click the tab labeled **Schedule**. Click on the **Enable** box. Daily updates are suggested, but you can specify the times in which the updates are to occur (clock times based on 24 hour clock. If you want autoupdate to run at 1:00pm enter 13:00).



Click on **Apply** and close all windows. Your computer is now configured for **Scheduled AutoUpdate**. The Console will automatically update daily, if you are connected to the Internet, and install the latest Virus Definitions and Scan Engine update for your NAI VirusScan software.